

PLAY STRATEGY 2007 - 2012
FREEDOM TO PLAY



Supported by

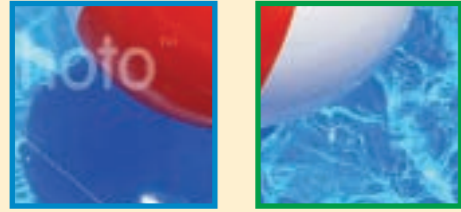
The National Lottery[®]

through the Big Lottery Fund





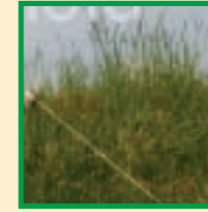
FREEDOM TO PLAY



CONTENTS



FREEDOM TO PLAY



FOREWORD

FOREWORD	03
1. SETTING THE SCENE	04
2. STRATEGIC LINKS	16
3. PLAY AUDIT	22
4. CONSULTATION	30
5. CONCLUSION	33
6. ACTION PLAN	36

The aim of this Strategy is to set out Harrogate Borough Council's proposals for the management and development of the playing opportunities for the under 18s in the Harrogate District over the next five years.

There are over 36,000 children and young people within the District and they form an important part of our community. It is my wish that through this strategy their 'right to play' is enshrined in Council Policy enabling children and young people to improve their environment and enhance their play opportunities both at 'organised' and 'informal' levels enabling them to develop fully.

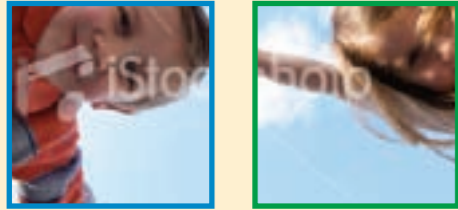
We have a duty to ensure that play opportunities are given to all our young people and this is not only through facilities provided by the Council but also by creating environments where children can play safely yet develop and create opportunities themselves. In addition it is important that the children and young people of our District have a say in what we provide. To achieve this I am determined to ensure the Council works with children and young people across the District and other providers who are involved with this group.

As the Council's Play Champion and Cabinet Member for Cultural Services, I take play very seriously. I am committed to the children and young people of the District and this strategy sets out our vision for making a real difference for them. I hope you will enjoy reading it and if possible will support us as we deliver it over the next few years.

Councillor Mrs Pat Jones
Harrogate Borough Council Play Champion and
Cabinet Member for Cultural Services



FREEDOM TO PLAY



SETTING THE SCENE

Introduction

What do you think play is?

“Somewhere me and my friends could really have fun!”
(aged 10)

“Something to do when you are not working”
(aged 48)

“Its fun to play outside but boring inside”
(aged 8)

“Enjoying yourself and letting go of your inhibitions”
(aged 26)

“Having fun with my friends”
(aged 14)

As you can see, play often means different things to different people whether they are an adult or child. In the eyes of children and young people the word play often takes on another dimension and as such, when considering a play strategy, it is important that this is recognised and taken into account to ensure that as much play value as possible is achieved for those it is intended for. In the development of this strategy, Harrogate Borough Council has taken considerable efforts to try to get the views of all, particularly young people.

We all know children and young people are immensely important to society as a whole but do we as adults recognise they are often not given the same opportunities as older members of the community. For example do we consult children and young people in the way we provide services for them, in such a way that their views are considered and taken on board? Do we provide what they want? We like to think we do but how do we know?

Harrogate Borough Council recognises that children and young people are an important part of this community and their ‘right to play’ should be enshrined in Council Policy. Not only that but children and young people should have more choice and influence over the services and facilities that are available to them and should be given the opportunity to be involved, enabling them to improve their environment and enhance their play opportunities to make sure they have a better place to live.

This strategy looks to address these issues and involve children and young people not only in the opportunities that play provides but also in encouraging their involvement so that they can influence and have a say in the play facilities which are provided for them.

Through this strategy, Harrogate Borough Council aims to give all young people the chance of a positive future by helping them to learn in ways that motivate and stretch them and enable them to achieve; engage in positive developmental activities; make informed choices about their lives and benefit from high-quality, targeted support. It also aims to make sure that all young people are given the best chances in life to succeed – by improving their play opportunities.

In addition, the Council is determined to achieve continuous improvement and deliver excellent customer services and in doing so is working to bring together services to make sure that it acts as one organisation to find effective ways to solve community issues.

This new Play Strategy will complement Council policy and will be a contributing factor across the Council when new strategies are being developed/rewritten or when others are delivering services. It will also be an influencing factor in achieving the objectives outlined above.

Vision for play

Harrogate Borough Council is committed to providing a positive play experience for all young people, and would like every child and young person to be healthy, happy and enjoy their free time.

Harrogate Borough Council is committed to ensuring exciting, stimulating and creative play opportunities are available to all by providing both supervised and unsupervised quality play provision that give opportunities for challenge.

Aims

- To ensure every child and young person has access to good quality play environments, which meet their needs for adventure, accessibility and choice across the Harrogate District.
- To provide challenging play environments to inspire and stimulate children and young people to explore their surroundings.
- To work with partners and parents to raise awareness of the importance and value of play to all children and young people and whilst working in partnership with these agencies, support the development of new play opportunities.
- To promote the development of active and meaningful consultations with children and young people, local residents, organisations and agencies involved with play provision in order to direct the way that play opportunities are delivered.



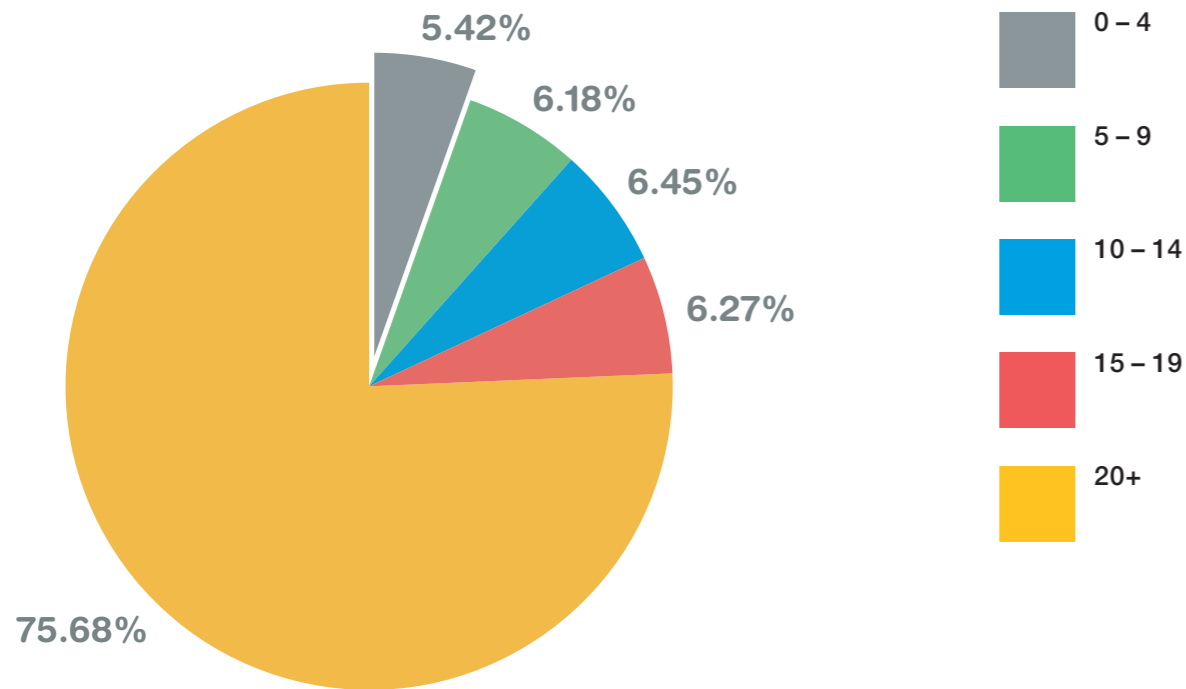
Our Community

The Harrogate District is part of the County of North Yorkshire and extends over an area of 504 square miles. The District is characterised by being both rural and urban in nature, which in itself, creates major issues.

The population of the District is approximately 155,000. With around 36,803 aged 19 and under, this represents a quarter of the total population for the borough. (Harrogate Borough Council's *Corporate Plan 2005 – 2008*).

The split is made up as follows:

Percentage breakdown of population



In addition the ethnic context of the Borough is 98% white British (Census 2001).

In education terms, attainment in the Harrogate District exceeds the national average and qualifications amongst the working age population in the District are also high.

Harrogate and District is seen as an affluent area, with many people relocating; it has been reported (via surveys undertaken by several organisations from financial institutes to popular TV programs) to be one of the top places in the country to live. Its perceived prosperity makes external funding grants very hard to secure with many funding bodies looking only at the whole area and not at individual areas of deprivation.

These surveys may paint an idyllic picture, however, the reality is different. There are areas of deprivation within the District (www.neighbourhood.statistics.gov.uk) which fall within the top quartile within the indices of deprivation and are in need of help and support from numerous different agencies, including Harrogate Borough Council. Therefore all agencies involved need to ensure that there is appropriate provision irrespective of the area they live in, to enable all children and young people to participate and 'have the right to play' and to 'engage in recreational activities appropriate to their age' as stated by the UN Convention on the Rights of the Child (1989) - Article 31.

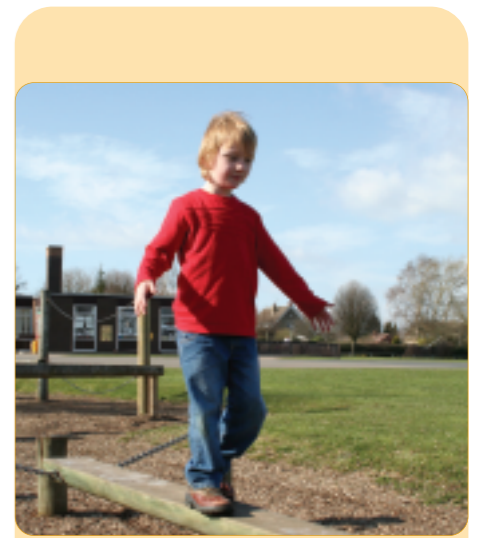
What is play?

Children's play is freely chosen, personally directed behaviour that is motivated from within. Play should empower children, affirm and support their right to make choices, to discover their own solutions and develop at their own pace and in their own way.

Every child should have the right to a play environment, which stimulates and provides opportunities of risk, challenge and growth of confidence and self-esteem. It should also be fun.

Play should offer opportunities to extend exploration and an understanding of the wider world and therefore physical, social and cultural settings beyond their immediate experience.

Play enables children to learn about themselves, the people around them, their environment and the community in which they live. There are many different types of play, highlighted by Bob Hughes (a leading play professional and play theorist) in his *Taxonomy of Play Types*, below: -



• Symbolic play:	Includes pretend play, role-play, socio-dramatic and imaginative play. A symbol is when one thing stands for another.
• Creative play:	Play with natural materials, creation of an idea.
• Pretend or lucid play:	When an action or object is given a symbolic meaning which is different from real life, e.g. a peg is a key.
• Role-play:	This occurs when pretend symbols are used together; 'driving' to the shops in a car (box) while turning the wheel (plate), unlocking the door with a key (peg).
• Socio-dramatic play:	Role-play and pretend-play together.
• Imaginative play or creative play:	Children use real-life experiences and re-arrange them in their play.
• Fantasy play:	Role play of situations that children do not understand but that might happen to them e.g. getting married, flying to the moon etc.
• Manipulative play:	Celebrates what a child can do rather than struggling to do: skateboarding, riding a bike etc.
• Physical play:	Development of gross and fine motor skills.
• Rough and tumble play:	Involves chasing, catching, pretend fights.

The value of play

Why do you play?

"To keep busy and to have fun" (aged 11)

"To get fresh air, and you're not alone" (aged 10)

"So I'm not bored" (aged 10)



Harrogate Borough Council believes that every child and young person needs to have an equal opportunity to participate in playful experiences, regardless of their ability, age, gender, race, religion or where they live. Every child is an individual and has the right to be respected for their individuality and diversity.

Children have a right to a standard of living that is good enough to meet their physical, mental and moral needs and social development (UN Convention on the Rights of the Child (1989) - Article 27).

Play provides children with opportunities to enjoy freedom, and exercise choice and control over their actions. It offers children opportunities for testing boundaries and exploring different environments with a wide range of physical, social and intellectual experiences to be gained.

Play, and the provision of a range of opportunities to play, is one of the single most important factors in creating an environment that supports our youngest citizens to fully realise their potential.

Chris Smith, former Secretary of State for Culture, Media and Sport (1998), recognised this when he said:

"I cannot think of anything else that offers so much to children - all those benefits and fun too! Play is not only important to the quality of life of children, it is of great importance for the country's future, to the creative industries and for the economy".

While playing, children should be at the centre of the process, in a stimulating environment that provides opportunities for risk and challenge. There is a time for adult direction and intervention, which needs to be handled sensitively, at the right time and in the right manner. Quality play workers can often enhance children's play by facilitating more challenging opportunities in the built and natural environment.

In 2004 The Right Honorable Frank Dobson MP published a report called *Getting Serious about Play: A Review of Children's Play 2004* and recommended that the government and councils should make it a higher priority to give children and young people good quality play facilities. He went on to say that we must also recognise that it is our responsibility to ensure that children and young people have play opportunities available to them that meet their requirements. There is a clear responsibility for decision makers, across the public, private and voluntary sectors to take a co-ordinated approach to address this lack of play opportunities, by providing rich, exciting, stimulating play environments and experiences. Investing in play will contribute to a society that is: -

• Healthier	• Family friendly
• Innovative	• Creative
• Culturally dynamic	• Explorative
• Socially aware	

Recognising this, Harrogate Borough Council will respect children and young people, will listen to them and help them to be listened to. Children and young people are our future and therefore their thoughts, ideas and plans need to be taken into consideration when planning play opportunities. Consultation with children and young people will form a partnership where they feel valued, trusted and involved in the decision making process.

Play and health

It is well recognised how important play is to children's health, whether it be mental or physical, and how it is an effective way of giving them opportunities to practise making and consolidating friendships and dealing with conflict. These skills are needed in order to become emotionally literate and to increase children's resilience to mental health problems. (Mental Health Foundation, 1999b).

In addition, more children today are overweight and obese than ever before (Institute for Public Policy Research).

There are two main factors that have caused an increase in the number of children who are classed as overweight. In simple terms, they eat too much (usually convenience food) and move around too little. As a nation, we have developed sedentary habits; our children no longer go out to 'play', instead they watch television, with many children reportedly watching 3 – 5 hours of television a day. This is without factoring in time spent on computers or games consoles. Not surprisingly, children who lead sedentary lives have the highest incidents of obesity.

William H Dietz, Director of Nutrition and Physical Activity, Centre of Disease Control and Prevention, Atlanta, GA (BMJ Vol. 332, February 2001) states;

'There is an obesity epidemic in young children (in the UK) ... the main solution is to reduce television viewing and promote playing ... opportunities for spontaneous play may be the only requirement that young children need to increase their physical activity...'

Inactivity during childhood might: -

- Limit physical capacity during childhood and later in adult life.
- Increase susceptibility to obesity, cardiovascular disorders and osteoporosis.
- Continue to limit continuous play activities for future generations.

There is no doubt that appropriate exercise can be of great benefit in the development and health of a child. These benefits extend beyond the basic physical implications to include social and psychological aspects of health. Play provides those opportunities and assists children and young people to develop to their full potential.



PLAY

Objectives of play provision

In considering play objectives and in line with the National Playing Fields Association/PLAYLINK/ Children's Play Council (2001) *Best Play* publication - *What Play Provision Should Do For Children* - we have adopted seven key objectives:

GOOD PLAY PROVISION:
<ul style="list-style-type: none"> • Extends the choice and control that children have over their play, the freedom they enjoy and the satisfaction they gain from it.
<ul style="list-style-type: none"> • Recognises the child's need to test boundaries and responds positively to that need.
<ul style="list-style-type: none"> • Manages the balance between the need to offer risk and the need to keep children safe from harm.
<ul style="list-style-type: none"> • Maximises the range of play opportunities.
<ul style="list-style-type: none"> • Fosters independence and healthy self-esteem.
<ul style="list-style-type: none"> • Fosters the child's respect for others and offers opportunities for social interaction.
<ul style="list-style-type: none"> • Fosters the child's well-being, healthy growth and development, knowledge and understanding, creativity and capacity to learn.

When developing this strategy and the action plan, these underlining objectives were key.

Statements of commitment

To inclusion

Harrogate Borough Council recognises the importance of inclusion and understands that all children and young people:

- are of equal worth regardless of gender, race, religion, age, ability, social standing or where they live;
- have a right to play;
- have the right to explore social, material and imaginary worlds;
- are entitled to equal opportunities for play, to make choices, develop skills and interests and to make friends.

The process of inclusion enables all children and young people to have their needs and aspirations met within their local communities, where they feel valued, secure, have a sense of belonging and where barriers to participation and achievement are identified and removed. They have a right to be who they are and to be accepted as who they are. The key to inclusion is the feeling of being included.

The *Harrogate District Cultural Strategy 2003 – 2008* clearly promotes fairness for all and backs up the government's view that all strategies ...

"... need to be inclusive and reflect the local community's overall ways of life, its experiences, activities, choices, values and uniqueness."

(Creating Opportunities: Guidance for Local Authorities in England on Local Cultural Strategies – Department for Culture, Media and Sport, December 2000)

Harrogate Borough Council recognises the difference between inclusion and integration and aims wherever possible for an inclusive approach. However, we recognise that some children and families may prefer to access specialist provision. Where this provision is available, it will be of a high standard and still value and reflect diversity.

As stated by Alison John,

"Inclusive play provision is open and accessible to all and takes positive action in removing disabling barriers so that disabled children and non-disabled children can participate". (Kidsactive and Better Play)

For disabled children, negative attitudes and inaccessible environments compound the general problems experienced by other children, creating enormous social and physical barriers to their enjoyment of the right to play independently.

Harrogate Borough Council will seek to work in partnership with a range of statutory and voluntary organisations to develop a framework for inclusive play provision.

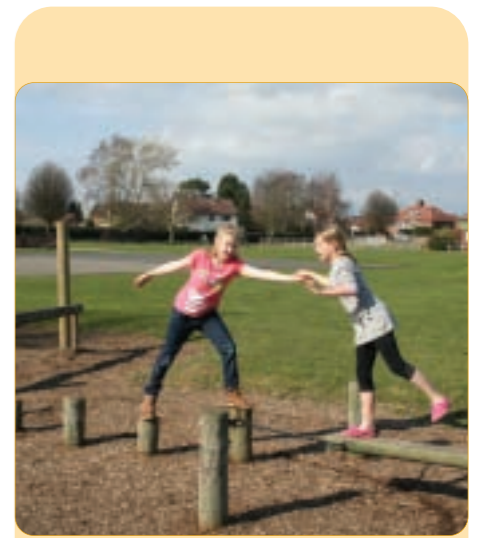
To participation

Harrogate Borough Council's belief in the value of play provision for children and young people is enforced by the following values: -

- Children and young people are the experts in their own play provision and we respect them for their own unique combination of qualities and capabilities.
- We will actively listen to the opinions of all children and young people, their views must be listened to and taken seriously.
- We will aim to empower children and young people to take control of their own play environment and help them to increase their choices.
- All decisions will be made consistently with clearly defined values for participation. We will aim to act quickly and avoid delay where reasonably practicable.
- We will develop a community of trust and co-operation where all voices are heard and respected.

The Harrogate District Community Plan - *Your Plan, Your Future* – was published in February 2004 by the Harrogate District Strategic Partnership (HDSP). The Council, as one of the key partners in the HDSP, supports the vision of the *Plan*: -

"Working together to enhance the many and varied communities, economies and environments of our towns and dales, we will make the District a place where people are valued and protected".



Part of this plan is

“to increase opportunities for young people”.

Through this participation, children and young people can learn about themselves and others, exercising social responsibility and learning new skills to increase and enhance their knowledge. This, in turn, will enable them to make a positive contribution to the communities in which they live.

Respecting and valuing the involvement and contribution of children and young people can foster a culture of civic pride and respect.

Harrogate Borough Council has a Youth Participation Plan, which aims to deliver more, better quality involvement of young people in policy development, decision-making and service development. The plan can be viewed online at www.harrogate.gov.uk/immediacy-4489; it will support the action plan set out in this strategy.

Harrogate Borough Council aims to give all children and young people an active say in how policies and services are developed to meet their needs and requirements. By being involved in the initial design and decision making process, children and young people will be able to take ownership of these, enhancing their future play provision need.

To risk

Over the past 20 to 30 years it is clear that the issue of Health and Safety has played a major role in the way that play areas are managed, developed and designed. Whilst the introduction of safety surfacing and new designs of equipment have driven down the incidents of accidents and injury to young people, many of the play areas of today are less exciting, challenging and stimulating than they used to be. As a result, children and young people find little to attract them to these areas and grow out of them at an early age.

The Play Safety Forum in *Managing Risk in Play Provision 2002* stated:

“There is growing concern about how safety is being addressed in children’s play provision. Fear of litigation is leading many play providers to focus on minimising the risk of injury at the expense of other more fundamental objectives. The effect is to stop children from enjoying a healthy range of play opportunities, limiting their enjoyment and causing potentially damaging consequences for their development. This approach ignores clear evidence that playing in play provision is a comparatively low risk activity for children ...

... Children need and want to take risks when they play. Play provision aims to respond to these needs and wishes by offering children stimulating, challenging environments for exploring and developing their abilities. In doing this, play provision aims to manage the level of risk so that children are not exposed to unacceptable risks of death or serious injury.”

Under the Health and Safety at Work etc. Act 1974, employers must take into account levels of risk and undertake risk assessments to determine whether or not the risk is considered high or low. The aim is to minimise risk to its lowest level to reduce injury to individuals. However in the case of play areas, if taken to the ‘nth’ degree, (which is frequently happening due to concerns over litigation) this means that they become unstimulating and as a result fail to meet their main objectives of being a place children and young people want to frequent, use and develop skills etc.

Consequently, it is important we recognise that for play areas to serve their true purpose there must be a level of acceptable risk built into them. The issue is to what degree is this taken.

In addition to the Health and Safety at Work etc. Act 1974, we are also governed by two European standards with regard to children’s play areas: EN 1176 and EN 1177. These also focus on the issue of risk.

Harrogate Borough Council recognises the potential conflict between risk management and exciting, stimulating play areas. Harrogate Borough Council is committed to provide play areas that are as safe as reasonably practical but exciting wherever possible. It recognises that it is necessary for there to be some risk built into the design of these areas. That risk will be managed through the use of risk assessments when designing new play areas and opportunities for new play experiences for children and young people.

To quality assurance

Working with Children and Young People

Harrogate Borough Council is committed to ensuring that all staff who work with children and young people are suitably qualified and trained.

Suitability checks, interviews, references and Criminal Records Bureau checks are undertaken before a member of staff is employed to work with children and vulnerable people. Staff are trained to a high standard as required by Ofsted, the regulatory body inspecting schools, pre-schools, out of school clubs and holiday schemes.

Regular training sessions are provided with appropriate council policies and procedures being adhered to. In line with Qualifications and Curriculum Authority guidelines, relevant staff are trained to the appropriate level.

Funding is accessed through North Yorkshire County Council bursaries, which enable Harrogate Borough Council to train permanent staff in playwork National Vocational Qualifications.

Playworkers, volunteers and other staff are given the opportunity to access training prior to the start of school summer holidays. External trainers provide this, offering induction standard qualifications in playwork, which is recognised by Ofsted and SkillsActive, the sector skills council for playwork. To continue the good practice of quality assurance across Harrogate Borough Council playscheme sites, we will commit to assess, evaluate and develop all areas.



PLAY

Through the Play Forum (made up of representatives of Harrogate Borough Council’s playscheme and the Play Development Officer), meetings and site visits, the Play Development Officer observes and reports on good practice and shares ideas. In line with Ofsted guidelines all playschemes adhere to the National Standards and where possible exceed the minimum requirements. Action plans are implemented, updated and amended as required.

Each site has been and will continue to be assessed on play value. This will include consideration of resources, staff commitment and qualifications, room layout and accessibility and the commitment to provide quality activities.

The Built and Natural Environment

Harrogate Borough Council is committed to providing children and young people with high quality areas that can stimulate play and are within reach of those wishing to use them. 'As such, as part of the new Planning Policy Guidance 17 (see page 19) consultation was undertaken with various groups of all ages to establish an overall vision for the “Provision for Children and Young People”. The resulting vision was:

“Exciting, stimulating, well equipped areas that provide a wide range of high quality facilities including play equipment, casual play areas (for kick about, cricket and other ball games), skateboarding areas, bike areas, basketball courts, teen shelters etc. as appropriate, which cater for the needs of children and young people of all ages and abilities. Facilities to be well maintained, safe, secure, dog free and located within a clean environment with good access.”

In order to develop a qualitative assessment system for all Harrogate Borough Council's Open Spaces etc., the Green Flag Award (National Standard for Parks and Green Spaces) framework was used and modified to fit each of the typologies identified as part of the guidance published by the government for developing planning policies for open space (PPG17).

This recommended eight typologies, and listed below are each of these typologies with the government’s interpretation as to their primary purpose:

PPG17 TYPOLOGY	PRIMARY PURPOSE
Parks & Gardens	Accessible, high quality opportunities for informal recreation and community events
Natural & semi-natural green spaces including urban woodlands	Wildlife conservation, biodiversity and environmental education and awareness
Green corridors	Walking, cycling or horse riding whether for leisure purposes or travel and for opportunities for wildlife migration
Outdoor sports facilities	Participation in outdoor sports, such as pitch sports, tennis, bowls, athletics or countryside and water sports
Amenity Green space	Opportunities for informal activities close to home or work or enhancement of the appearance of residential or other areas
Provision for children and young people	Areas designed primarily for play and social interaction involving children and young people, such as equipped play areas, ball courts, skateboard areas and teenage shelters
Allotments, community gardens and urban farms	Opportunities for those people who wish to do so to grow their own produce as part of the long term promotion of sustainability, health and social inclusion
Cemeteries, disused churchyards and other burial grounds	Quiet contemplation and burial of the dead, often linked to the promotion of wildlife conservation and biodiversity

Harrogate Borough Council has adopted these typologies with just one amendment where Green Corridors and Amenity Green Spaces have been merged together as one. Many of these typologies give rise to opportunities for children and young people to play and it is important that these opportunities are not lost in the way the land is managed and developed.

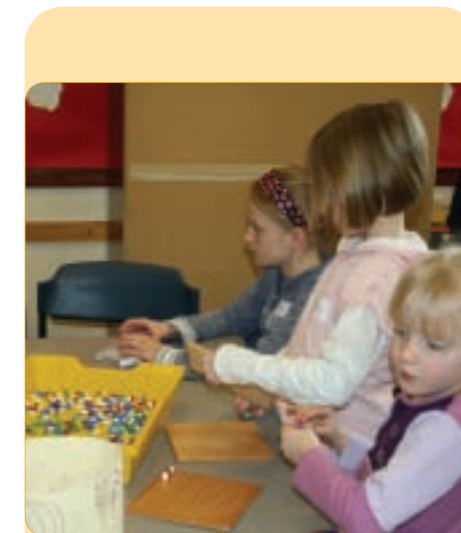
Using the ‘Green Flag’ framework as a basis and taking evidence collated from the consultation it was possible to determine what the community felt was important and what they felt was not so important.

During 2005 a model for assessing open space quality was developed where many criteria are assessed on a scoring system, which is then added up to give an overall score for the facility/open space. The areas that were identified as most important are weighted as part of that process to ensure that they reflect community aspirations.

Each of the areas are then plotted onto a Geographical Information System (GIS) which visually shows their location on a computerised map and colour grades them based on score. This gives a very easy to understand visual map showing all of the open space/play areas and their overall quality rating.

This mapping system is now being used to determine where resources are targeted each year and also for the allocation of commuted sums generated by new property developments, to ensure best value for money.

Harrogate Borough Council will seek to work in partnership with a range of statutory and voluntary organisations to develop a framework for inclusive play provision.



PLAY



STRATEGIC LINKS NATIONAL, REGIONAL AND LOCAL AGENDAS

Strategic Links

There are two main government strategies that form the foundation and the modern way of thinking when dealing with the issue of children’s play. These are *Every Child Matters, December 2004*, from the Department for Children, Schools and Families (DCSF) and the national, regional and our own Children and Young People’s Plan 2006-2009.

Every Child Matters

Being healthy

Play is crucial to health and development throughout childhood, contributing to social, physical, intellectual, cultural, emotional and psychological development. The physical activity involved in energetic play provides children and young people with a significant amount of their regular exercise, showing that school-aged children and young people get more exercise in free-play than most structured activities.

Good play opportunities give children and young people the chance to try out and experience a range of emotions in a ‘safe’ way. It allows them to learn and develop emotionally by promoting resilience and fostering self-esteem.

Staying Safe

Some of the barriers that stop children from playing outside their home are the fear of strangers, increased traffic on the roads and bullying from other children. Good play provision protects children through reducing unacceptable levels of danger, while allowing them the opportunity to challenge themselves and use their initiative. It enables children to take risks, to think through decisions and gain increased self-confidence and resilience.

Enjoying and achieving

When children are enjoying themselves playing they are able to define their own goals and interests, decide what is a success or failure and pursue their goals in their own way. Giving children the chance for free, uninhibited play allows them a psychologically safe space to try out new roles and experiences, which in the end will enhance their enjoyment of life, enabling children to fulfil their potential; through problem solving, language and literacy skills, and social skills it allows them to express their emotions. Through play, children’s imaginations and creative interests develop and they are able to explore boundaries, be fully absorbed in what they are doing and feel satisfied with what they have achieved.

Making a positive contribution

Children learn from the way others and the environment react to their play, the effects of their actions and value others place on them. Good supervised play provisions involve children and young people in decisions about resources and facilities that might be available to them. Through community consultation with children and young people, play provision is becoming more appropriate, children are feeling valued and they are able to develop their skills and knowledge and become valued community members. Respecting and incorporating children and young people’s views into plans and provision helps develop motivation and potentially participation in society.

Economic well being

Good play provision enables parents to work or train and allows them to feel their children are safe, happy and enjoying themselves. By providing genuine challenge and excitement in play provisions, children and young people are prevented from becoming bored and participating in unacceptable social behaviour. Development of outside play and recreational spaces has been shown to have a measurable impact on local interaction, new friendships, community cohesion and community safety.

NYCC Children and Young People’s Plan 2006 – 2009

The NYCC Children and Young People’s Plan was identified as an action from the North Yorkshire Local Area Agreement 2007/8 – 2009/10 (LAA). The LAA features five thematic blocks, one of which targets children and young people’s play. Increased participation by children and young people also contributes to the Stronger Communities LAA theme by empowering local people to have a greater choice and influence over local decision making and having a greater role in public service delivery.

The NYCC Children and Young People’s Plan proposes changes over three years. It proposes that we work together to make North Yorkshire one of the best places in the country for children and young people, their parents and carers, and for the people who work with them. One of the operational objectives is to increase opportunities for young people within the District. The accountable body for this plan is the North Yorkshire Children and Young People’s Strategic Partnership.



They are committed to all children having good lives as adults and we value their childhood and teenage years as important in their own right. Their identified priorities for improvement are:

Be healthy	Improve access to sports and fitness activities for children and young people, which has been identified as a need in the consultation.
Stay safe	Children and young people have told us they want places to play and hang out where they feel safe and free from threatening behaviour and intimidation.
Enjoy and achieve	Further develop an inclusive culture and practice in all settings, schools, provisions and communities.
Make a positive contribution	Ensure children and young people are involved in making decisions about matters and services that affect them (so that the services and the support they receive are what they and their families want and need).
Achieve economic well-being	Increase the opportunities for children and young people to develop independent living skills, particularly learners with learning difficulties and disabilities, providing them with appropriate support and guidance.

Harrogate Borough Council's Children and Young People's Action Plan 2007/08

An outcome from this document is that all Local Authorities will adopt a local plan for children and young people. Harrogate Borough Council has written and adopted an action plan drawn from the above NYCC Children and Young People's Plan that identifies key actions in 2007/08. This action plan defines the Council's role and contribution to improving outcomes for children and young people as part of the Every Child Matters change programme. It aligns these priorities to the agreed objectives within the NYCC Children and Young People's Plan 2006/09 and shows how these actions contribute to achieving Harrogate Borough Council's corporate priorities.

An outcome of the Harrogate Borough Council Children and Young People's Strategy is the Youth Participation Plan (YPP) which addresses a weakness identified in the 2004 Harrogate Borough Council Comprehensive Performance Assessment (CPA) – that there is no overall understanding of the needs of young people and hard to reach communities.

The following table lists the other strategies that play links with and shows how play can contribute to them.

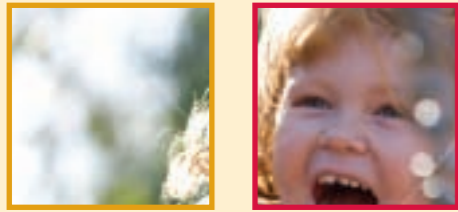
NATIONAL STRATEGY TITLES	BRIEF DESCRIPTION OF STRATEGY	HARROGATE BOROUGH COUNCIL'S (HBC) COMMITMENT
Youth Matters, the youth green paper published 18 July 2005	This paper states that all young people should have the opportunity to take part in a wide range of positive activities in their leisure time. We want more young people to take part in these activities by empowering them to shape what is on offer.	HBC has a commitment to empowering young people and giving them somewhere to go, something to do and someone to talk to. This is highlighted in our Children and Young People's policy statement.
Article 12 of the United Nations Convention on the rights of the child	This requires that "State Parties shall assure the child who is capable of forming his or her own views the right to express those views freely in all matters affecting the child, the views of the child being given due weight in accordance with the age and maturity of the child."	Working in partnership with other agencies and the voluntary and community sector, HBC will develop positive, creative and constructive activity programmes for young people ensuring these services are responsive to what the young people want.
The Children's Act 1989 report 2004 and 2005. Taken from the Secretary of State for Education and Skills report.	This aims to ensure that all children and young people make a positive contribution to their communities enabling them to understand and care for their natural and built environment. Outdoor play provision should not be restricted to formal equipped play areas and opportunities should exist to develop informal play in woodlands, open spaces and along green links in the urban fringe.	HBC will ensure that all their play environments are of good quality and that positive activities will be developed with external agencies to ensure all children and young people have the opportunities to participate in a leisure activity to encourage a healthier lifestyle. Any play environment provided will be in consultation with children and young people to ensure it is what they want and therefore an enjoyable activity.
Extended Schools, health, from the Department for Education and Skills, 2006 to 2010.	The extended schools programme is an exciting and challenging opportunity to improve attainment and achievement by removing obstacles and barriers to learning which lie beyond the classroom and the school gate.	HBC will build and develop partnerships to help provide positive activities for children and young people to develop and flourish, enabling them to thrive and become respected and responsible members of their community.
Lifelong Learning	This encourages more skills and education for parents and children regarding different cultures. It also promotes activity clubs for children who want to learn additional skills.	HBC aims to work closely with local education authorities such as NYCC to provide a range of well thought out, well planned and balanced play opportunities.
Planning Policy Guidance 17 (PPG 17) July 2002	Good quality play space needs to be planned and PPG 17 Planning for Open Spaces and Recreation sets out the Government's national policy to enable Local Authorities to ensure effective planning for open space, sport and recreation including the provision of open space for "children and young people".	This will be achieved by continually updating the assessments of such space on a programmed basis and ensuring that when commuted sums are calculated and allocated the issue of quality and the level of provision of open space is taken into account.
Commissioning framework for health and well-being March 2007	It is important for all children and young people to enjoy their free time and be encouraged to participate in leisure or play activity to increase their health, fitness and well-being. Supporting children and young people's play and development is not only a duty it is an exciting opportunity.	This basic requirement should be achieved through working closely with external agencies to provide safe, stimulating, accessible and challenging opportunities for all children and young people within the local community.

NATIONAL STRATEGY TITLES	BRIEF DESCRIPTION OF STRATEGY	HARROGATE BOROUGH COUNCIL'S COMMITMENT
NORTH YORKSHIRE - COUNTY WIDE (NYCW) STRATEGY TITLES Delivery Report for the Local Transport Plan 2001 to 2006	This document is the delivery report for the first North Yorkshire Local Transport Plan 2001 - 2006 (LTP1). This document addresses all the travel issues and also talks about School Travel Awareness plans.	The County Council proposes that qualified teachers are employed as School Travel Awareness Assistants (STARs) on a part time basis. They would visit the 420 schools in the county helping them with this plan. This can link with children's play.
NYCW STRATEGY TITLES Sure Start Children's Centres Strategy. (In North Yorkshire Children and Young People's Strategic Partnership. July 2006)	Children's Centres are one of the key means of delivering the Every Child Matters agenda, with the clear aim of improving outcomes for all young children.	Working closely with all the relevant agencies, HBC aims to develop children and young people's services to gain maximum benefit for all.
HBC STRATEGY TITLES HBC Safer Communities Strategy 2005 – 2008	This strategy brings together issues of concern within the district and identifies ways in which they can be challenged. It is a strategy for change and aims to make a real difference to all communities. They have also linked with the 'Every Child Matters' outcomes.	Their vision is to maintain and improve the quality of life within the community, ensuring that people feel safe and not threatened by crime and disorder or other antisocial behaviour.
HBC – Corporate Improvement Plan 2005 – 2008	Children's play links in with the four HBC key elements; its vision is: <i>"To make the Harrogate District a better place to live, work and visit by preserving its heritage, enhancing its unique environment, delivering first-class public services and encouraging everyone to share in its success."</i>	This plan is aimed at unleashing the potential within the Harrogate District 2005 – 2007. It has four key elements: providing clear direction; improving performance; delivering customer services; and building organisational capacity.
Harrogate District Strategic Partnership (HDSP) Community Plan February 2004	The vision is: "Working together to enhance the many and varied communities, economies and environments of our towns and dales, we will make the District a place where people are valued and protected and where access, opportunities, prosperity and support are available to all."	The HDSP has 10 local priorities, several of which the Play Strategy will contribute to - namely, increased physical activity across the community and improved access to facilities and services.
HBC Housing Strategy (Draft) July 2006	This plan looks at housing issues in the Harrogate District; this also relates to facilities for children in the areas they work.	This is currently in draft form.
HBC Corporate Rural Community Investment Plan 2007 - 2008 (draft) February 2007	This plan provides current and emerging needs and opportunities. It captures services and actions that the council provides for the rural community.	Looking at the rural areas of the Harrogate District this Investment Plan identifies the needs and demands of the rural communities.
HBC Cultural Strategy 2003 – 2008 Culture in the Harrogate District, Looking to the Future ... (2003 – 2008)	The District Cultural Strategy aims to take account of the current situation and the challenges facing those involved in cultural provision across the District and is both ambitious and realistic.	This strategy aims to put culture at the heart of improving people's lives in the Harrogate District and defines a cultural charter for the district. Its three main priorities are access, information and communication and provision.

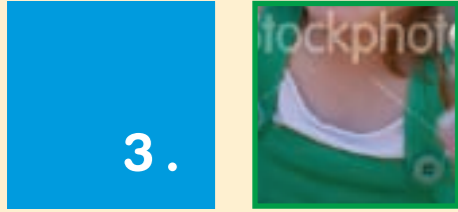
CHILDREN AND YOUNG PEOPLE ACTION PLAN 2007/08

HBC STRATEGY TITLES	BRIEF DESCRIPTION OF STRATEGY	HARROGATE BOROUGH COUNCIL'S (HBC) COMMITMENT
HBC Sport and Active Recreation Strategy 2007 – 2012 (Draft)	This strategy will outline ways that organisations involved in the delivery of sport and active recreation can work together in a co-ordinated way over the next five years to develop the sporting potential and health of the community.	This strategy is relevant to play, as sport and play - although different - can be linked. The Harrogate Sports Development team also manage the Granby Sport and Play Development Centre, which offers holiday playschemes.
HBC Playing Pitch Strategy June 2004	The increasing concern at national government level over the loss of playing fields has prompted the need for local playing pitch assessments and strategies, which identify current and future requirements for playing fields.	Play contributes to the use of playing fields. When they are not in use as a sporting venue they are often played on in a recreational manner. They provide an open space that children and young people can use to play.
HBC Museums 5 Year Forward Plan 2006 - 2010	This plan identifies various priorities and how the council's Museums & Arts division plans to link into other government priorities. One of the linking priorities is to improve the quality of life of children and young people.	Play can help with these target outputs by providing an audience/group of inspired children and young people, helping the children and young people identify and put a value to the history and culture of the environment they live in.
HBC Diversity Strategy 2007/08	Over the years we have worked towards integrating equalities into the provision of services, which reflect the diversity of our community. Our aim is mainstreaming diversity issues in service delivery. We see equality as a fundamental part of our aim.	HBC will have a commitment to:- ensure that equal opportunities and the principles of fairness underpin all aspects of policy, procedure, service development, consultation and decision-making.
HBC Youth Participation Plan	This plan aims to deliver more and better quality involvement of young people in HBC policy development, decision-making and service development.	This plan will support the action plan set out in this strategy.
STRATEGIES CURRENTLY UNDER REVIEW HBC Sport and Leisure Strategy 1998 – 2003	This strategy's key themes are play, young people, health and physical activity and the voluntary sector. "Play is a process vital to all children's development and one of the ways children learn about themselves, the people around them and their environment."	This demonstrates the commitment of HBC's Sport and Leisure service to providing a good quality inclusive play programme, with the need being identified by the children and young people and extensive consultation.
HBC Community Engagement Strategy 2006	This is a strategy to involve people as customers, people as citizens, people in communities and interest groups across the District in relevant and effective consultation on the council's policies and services.	This links to play because it has been recognised at a national level that children and young people need to be consulted and engaged with the opportunities made available for them.
HBC Strategy for Parks and Open Spaces 1999 – 2004 currently under review.	There are five key themes in this document: Overall Management, Parks and Open Spaces, Arboriculture, Children's Play Areas and Landscapes. The Parks service will promote the use of Parks and Open Spaces for relaxation, enjoyment, active recreation and education.	This strategy sets out how the Parks service will cater for play in the facilities and open spaces that they work in. It also states the current regulations they will work to in order to deliver a first class service.

CHILDREN AND YOUNG PEOPLE ACTION PLAN 2007/08



FREEDOM TO PLAY



PLAY AUDIT

Play Audit Methodology

The methodology for the play audit was developed based on information from a number of sources; this information is not all encompassing as all groups providing play opportunities do not have to be registered.

For equipped playgrounds

All Harrogate Borough Council owned equipped playgrounds were audited against the following criteria:-

- Harrogate Borough Council Playground Standard
- Advice from Play England
- PPG17 and the Companion Guide to PPG17 *Assessing Needs and Opportunities*.
The framework advocated was used to develop the Open Spaces Policy that looks at quantity and quality as part of the assessment. This determines the needs and opportunities for all areas of open space including play areas

For play provision

The Children's Information Service, North Yorkshire County Council provided information for all registered provision e.g. Parent and Toddler, playgroups/nurseries etc. Harrogate Borough Council provided information for Out of School Clubs and holiday playschemes and 4Youth provided information on youth clubs. Information on Extended Schools is still outstanding.

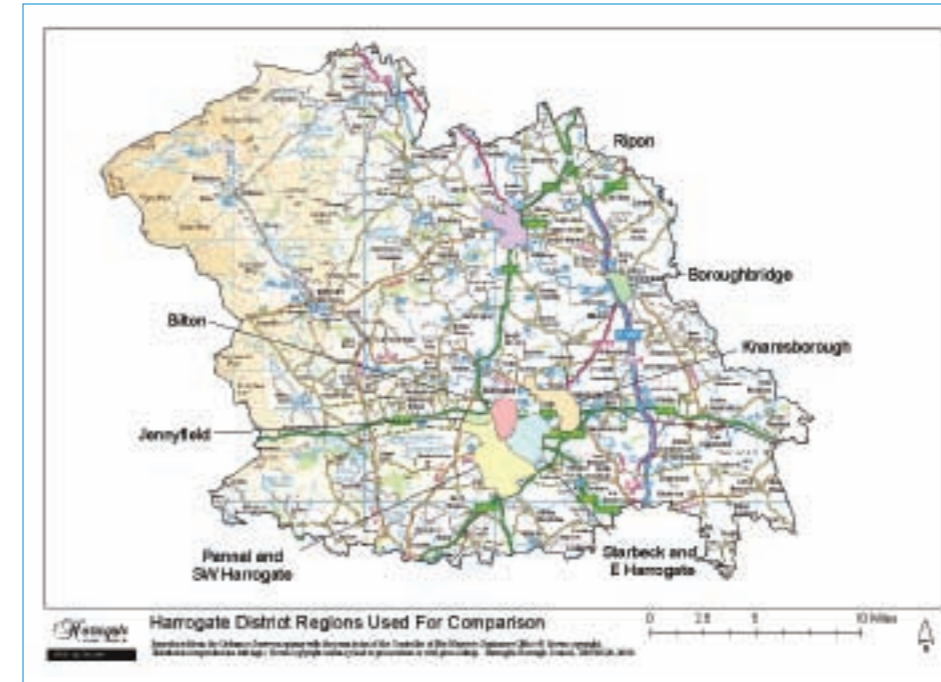
Methodology

The audit identified areas that lack facilities, areas where there may be over provision and what barriers there may be to access. In addition, when considering equipped play areas it also revealed the age range they cater for, play value, condition of equipment and if there were any problems associated with the playground. A detailed qualitative assessment was also undertaken to determine just what condition each play area was in to identify what actions were required to move forward and meet the objectives identified in this strategy.

Results

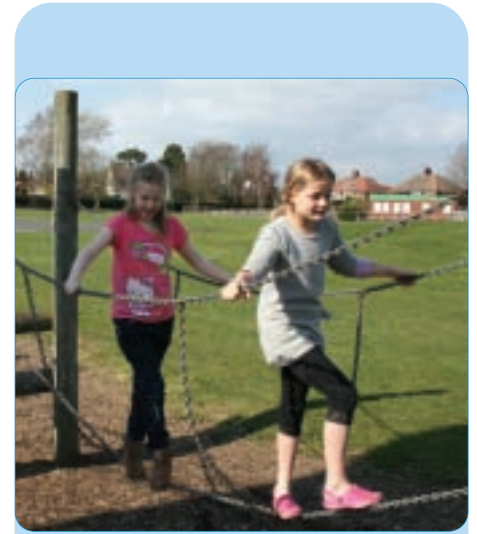
For ease of recording the audit findings, the Harrogate District was split into the following sections: -

- Harrogate;
- Knaresborough;
- Ripon;
- Boroughbridge;
- The rural areas, incorporating all the remaining areas of Harrogate District surrounding the main towns.

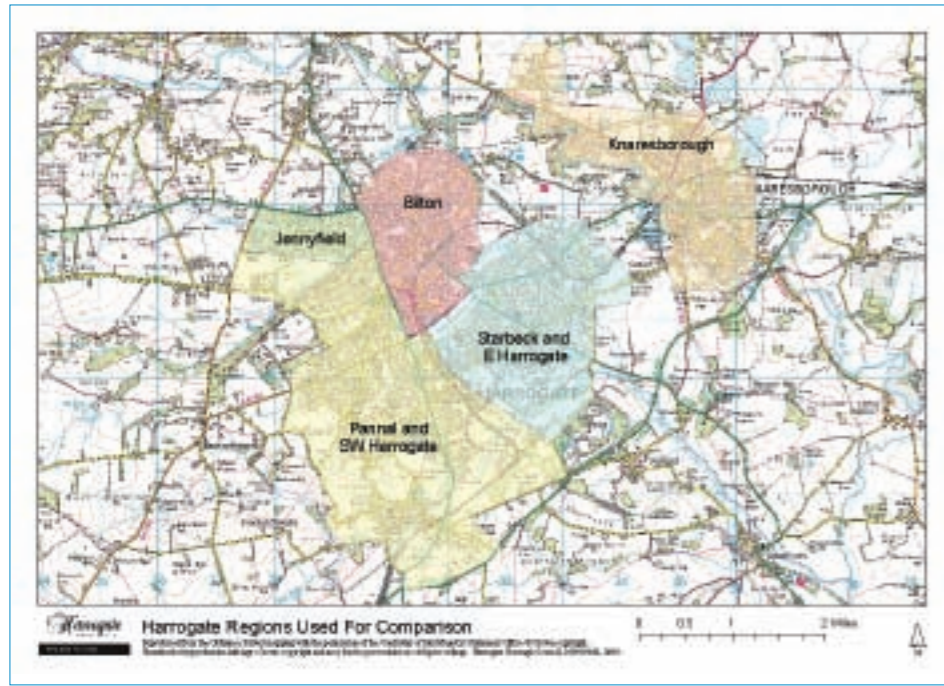


Plan showing split of Harrogate District

For ease of referencing and as the area was so highly populated when compared with other areas of the district, Harrogate was further split down into the following areas: Bilton, Starbeck, Jennyfields and south west Harrogate.



PLAY



Plan showing split of Harrogate District

In some areas barriers to play have been described as 'Social Issues'; these relate to existing known territorial boundaries or areas where there are greater distinctions between wealth.

Each area has been mapped using GIS for assistance and all the play areas have been qualitatively scored and categorised in relation to the assessment criteria to establish which ones are the best and which are the worst. As a result the findings in relation to each area (as listed above) are summarised below.

Summary of Audit Findings

The tables on the following pages detail the audit findings.

District location	Playground provision	Standard	Other children's facilities	Gaps in provision	Barriers to accessing play
Knarborough *Population: 14,963 24.2% are 19 and under	Eight children's playgrounds. There is a small over provision in some parts of the defined area and gaps in the Scriven area. Mixed range of standards, play value and condition.	One is in good condition and requires little or no work to reach the HBC standard. Four are generally satisfactory but require some additional play value to reach the HBC standard. One is suitable for further facilities for the over 11s. One has development opportunities for a Super Playground. One older children's area including Skate Park provision.	3 Parent and Toddler Groups 10 Pre-School/ Nursery Groups 5 Out of School Clubs 1 Children's Centre no Crèches 1 HBC Leisure Centre 1 Community Centre 2 Youth Groups 7 Parks or Recreation Grounds	There are limited facilities for older children and the under 6s. In Scriven there is no provision for any age group.	Two main roads run through the Knarborough area, the A59 York Road and the A6055 Boroughbridge Road, which dissect the spaces and prevent safe access. Social issues in the Stockwell area prevent some groups accessing facilities based in this neighbourhood.
Ripon *Population: 15,922 24.5% are 19 and under	Nine council managed children's playgrounds. Five privately managed children's playgrounds. There is small over provision in this area. All age ranges are catered for however the majority of equipment is for juniors with limited facilities for the other age groups. Mixed range of standards, play value and condition.	Of the nine council managed children's playgrounds: One is in good condition and requires little or no work to reach the HBC standard; Six are generally satisfactory but require some additional play value to reach the HBC standard; One has development opportunities for a Super Playground incorporating better facilities for children of all ages; One older children's area including Skate Park provision.	7 Parent and Toddler Groups 6 Pre-School/ Nursery Groups 4 Out of School Clubs no Children Centres 2 Crèches 1 HBC Leisure Centre 1 HBC Swimming Pool 2 Youth Groups 6 Parks or Recreation Grounds	Better equipped than other areas with fairly good distribution of facilities. Over 11s not well catered for. Limited Youth Club facilities.	Travel across the Ripon area between sites and social areas is difficult. Social issues prevent some groups accessing facilities based in particular areas of the neighbourhood.

District location	Playground provision	Standard	Other children's facilities	Gaps in provision	Barriers to accessing play
Boroughbridge *Population: 2,878 22.1% 19 and under	Three children's playgrounds located in a small area with no provision elsewhere in the town. Overlap of play provision but areas to the north do not have access to such facilities. There is provision for toddlers, juniors and limited facilities for the over 11s.	One is in good condition and requires little or no work to reach the HBC standard. One is generally satisfactory but requires some additional play value to reach the council standard. One has development opportunities for a Super Playground incorporating better facilities for the over 11s.	1 Parent and Toddler Group 3 Pre-School/ Nursery Groups 2 Out of School Clubs no Children Centres no Crèche 1 HBC Leisure Centre 1 Youth Group 1 Parks or Recreation Grounds	To the northern, more rural part of the area, there is no equipped play provision. Provision for the over 11s is also limited.	B6265 Main road through the centre of Boroughbridge. River Ure also dissects the town.
Villages/Rural Areas (area surrounding main towns) *Population: 56,438 25.8% are 19 and under	Nine council managed children's playgrounds. 34 playgrounds managed and maintained by Parish Councils. There is a need for older children's provision and good quality toddler provision. Of the nine children's playgrounds the majority are of a similar age and condition offering similar equipment.	Of the nine council-managed playgrounds: Three are in good condition and require little or no work to reach the HBC standard; Five are generally satisfactory but require some additional play value to reach the council's standard; One should be considered for decommissioning.	11 Parent and Toddler Groups 22 Pre-School/ Nursery Groups 9 Out of School Clubs no Children Centres no Crèches 1 HBC Leisure Centre 4 Youth Groups	There is no youth provision in the north of the District. Very limited provision for the under 6s and over 11s.	Access to cheap and regular travel across the District.

SUMMARY OF AUDIT FINDINGS

District location	Playground provision	Standard	Other children's facilities	Gaps in provision	Barriers to accessing play
Harrogate Population: 14,081 – 23% - are 19 and under. Due to its size, Harrogate has been broken up into four sub areas outlined below. In the whole Harrogate area there are 15 parks or recreation grounds.					
Bliton	Five children's playgrounds. There is a small over provision. Need for older children's facilities and an improvement of toddler provision. Juniors are well provided for. There is the possibility of creating a new play area on a piece of land in Bliton. Mixed range of standards, play value and condition.	One is in good condition and requires little or no work to reach the HBC standard. Two are generally satisfactory but require some work to reach the HBC standard. One is suitable for redevelopment. One could be considered for decommissioning.	4 Parent and Toddler Groups 4 Pre-School/ Nursery Groups 5 Out of School Clubs no Children Centres, 1 Crèche 2 Youth Groups 2 Community Centres	There are no equipped playgrounds within the Harrogate town centre area, however there are informal play opportunities in the same area to cover this. All the Pre-School groups are clustered in the Grove Road area. There is a general under provision for the under 5s.	A59 runs directly through the area, however there are equipped playgrounds on both sides of the road. A59 not perceived as a barrier to Pre-School/Nursery Groups as an adult will accompany children to these.
Jennyfields	Ten children's playgrounds. This is a significant over provision. The majority of the children's playgrounds are of a similar age and condition offering the same or comparable equipment and therefore play value. There is a need for a distinct older children's facility within the area and also good quality provision for toddlers.	Three are in good condition and require little or no work to reach the HBC standard. One has issues with ground movement. One is in a good position for development as an older children's facility. Three should be considered for decommissioning. One has options for residential opening and closing. Two are generally satisfactory but require some additional play value to reach the council standard.	No Parent and Toddler Groups 2 Pre-School/ Nursery Groups 2 Out of School Clubs 1 Children Centre 3 Crèches 1 HBC Community Centre 1 HBC Leisure Centre 1 Youth Group.	No older children's equipped areas offering teenage facilities. No Parent and Toddler Groups.	Social barriers caused by the range of housing within the Jennyfields estate from Council housing through to large detached private houses.

SUMMARY OF AUDIT FINDINGS

District location	Playground provision	Standard	Other Children's Facilities	Gaps in provision	Barriers to accessing play
Starbeck	Six children's playgrounds There is a need for older children's facilities within the area.	Three are in good condition and require little or no work to reach the Harrogate Borough Council standard. Two have development opportunities including some facility for teenager use. One is in a very poor condition and requires enhancement.	1 Parent and Toddler Group 7 Pre-School/ Nursery Groups 2 Out of School Clubs 2 Children Centres 2 Crèches 1 HBC Swimming Pool 3 Youth Groups	There are no equipped play facilities or Youth Groups located in the Hookstone area. There is limited space available in this highly populated area for additional children's equipped play and more informal play activities.	A6661 and Hookstone Chase form barriers to the nearest equipped children's playground and access to Hookstone Woods. There are also social issues that will prevent children from this area accessing facilities at the Fairfax Community Centre on Fairfax Avenue.
South west Harrogate	Nine children's playgrounds. There is a slight over provision. There is a need for an older children's facility. Toddlers and juniors are well provided for.	Three are in good condition and require little or no work to reach the HBC standard. One has awareness issues. Three are generally satisfactory but require some additional play value to reach the standard. One has access issues. Two are suitable for teenagers but are close together and one has development opportunities for a 'Super Playground'.	4 Parent and Toddler Groups 18 Pre-School/ Nursery Groups 6 Out of School Clubs no Children Centres 3 Crèches no HBC provision 1 Youth Group	There is a general lack of provision for older children both in equipped play and Youth Club provision. Most of this provision is in the north of the area.	No real barriers have been identified.
<p>* Census 2001 ** Using a distance threshold between play areas of 1,000 metres, determined as part of the work carried out when developing the Open Spaces Policy, which identified the distance people are prepared to travel to use a play area.</p>					

Conclusion of play audit findings

The audit of play facilities within the whole of the Harrogate Borough Council District has confirmed that generally there is a slight over provision of children's built playgrounds particularly in the Jennyfields area. The majority of playgrounds provided are designed for a limited age range, i.e. 6 to 11 years old and contain similar or the same equipment, with limited play value. There is a lack of older children's provision across the borough and some toddler provision.

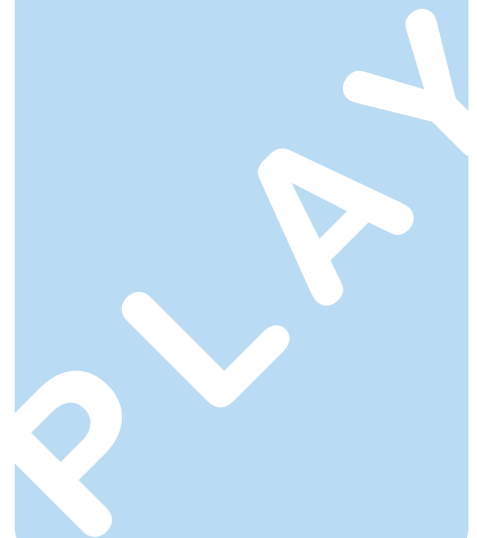
To address the issues, Harrogate Borough Council will:-

- Develop four existing play areas into "super parks" environments that will cater for 0-18 year olds, providing a range of equipment and challenges. (Knaresborough Pool, Ripon Spa Gardens, Boroughbridge Recreation Ground and Valley Gardens, Harrogate)
- Provide older children's facilities to include equipment and hangout space to include the provision of a skatepark in the Harrogate area
- Improve facilities for the under 6s
- Enhance the remaining playgrounds to meet the Harrogate Borough Council standard.
- Close four children's playgrounds. These are all in very poor condition and this action will release resources to manage the enhancement and additional proposals identified.

The Play Audit also concludes that there are limited facilities for older children, with some areas having no provision at all for any age group (particularly Scriven and Knaresborough). It also concludes that there are barriers to accessing play provision such as major roads passing through certain areas, limiting opportunities via access, or transport issues preventing children and young people visiting these sites.

To address these issues, Harrogate Borough Council will:-

- Enhance and develop present play provision to meet the needs of children and young people within the district
- Investigate and develop opportunities for future use of sites belonging to other agencies
- Increase and enhance good quality community based play provision
- Establish a play ranger service to take play provision to areas of need
- Link with NYCC to deliver 4Youth mobile projects.





FREEDOM TO PLAY



4. CONSULTATION

Consultation methodology

The consultation was carried out in the four main areas of the Harrogate District - Harrogate, Knaresborough, Ripon and rural in May 2007 (18.05.07~25.05.07). It was carried out to find out what children like to do in their free time now, what they have previously tried and what they would like to be able to do in the local area. The reason for asking this information was to ensure children were listened to with their requirements for their free time and assumptions weren't just made by adults.

Within each area playgroups, play schemes and youth clubs were visited to allow children and young people attending to provide their opinions. Where children were too young or unable to provide their own opinions, they were provided by their carer on their behalf.

If children who normally attended the session were absent, meaning they missed the opportunity to be consulted, information was left along with questionnaires and cameras for completion.

Three methods of consultation were adopted.

These were:

- Picture Boards
- Questionnaires
- Camera Shots

Picture Boards – display boards asking three main questions –

- (1) Where do you play or hang out now?
- (2) Have you ever tried these activities? (shown with pictures)
- (3) What would you like to do?

Children responded by sticking a specific colour of dot (relating to their age) on the relevant images.

Dots	TOTAL	Age Group		
		0-4 years	5-7 years	8-11 years
	131	37	45	49
Harrogate	36	10	13	13
Knaresborough	41	8	15	18
Ripon	27	12	7	8
Rural	27	7	10	10

Questionnaire – one survey for all ages and all areas (these were both depicted on the survey), designed to gain opinions relating to what children do in their free time now, what they have tried in the past and what they would like to do in the future. In the majority of situations the questions had set answers (all multiple choice) and there was also an option to provide further information.

Questionnaire Completion	TOTAL	Age Group			
		0-4 years	5-7 years	8-11 years	12-18 years
	72	18	1	14	39
Harrogate	27	8	–	2	17
Knaresborough	19	4	–	7	8
Ripon	13	–	1	5	7
Rural	13	6	–	–	7

Camera shots – children of all ages were provided with a camera to take photographs of what they do now, where they play etc. In some cases explanations were required (such as what they use this particular tree for etc.) so a control sheet was also sent out and completed. A restriction of 10 - 12 photos was put in place to ensure all children who wished to participate in this activity had the opportunity to do so.

Camera Shots	TOTAL	Age Group		
		0-4 years	5-7 years	8-11 years
	40	3	5	32
Harrogate	14	1	1	12
Knaresborough	3	1	–	2
Ripon	6	–	2	4
Rural	17	1	2	14



Consultation findings

By area, the results (relating to the picture boards) show that play equipment whether current, enhanced, new or advanced is desirable by 30% of the respondents as a 'free time activity' in all locations. Also scoring highly (by 27% of respondents) as a desirable pastime is 'organised play' i.e. play rangers for both organised games and more natural activities such as nature trails and climbing trees. Seating/hangout areas, unsupervised activities and new sports equipment rated much lower when respondents were asked which activities would be their favourite.



The questionnaire was answered mainly by the older children and parents (responding on behalf of children aged 0 - 4 years). These results show that approximately 29% of respondents would like access to the parks/grassed areas to play games and enjoy themselves. Approximately 24% of respondents would like to have organised outdoor events/games and more natural play environments as would be organised by a Play Ranger. Another 20% would like a skatepark area for rollerblading, skateboarding and riding their BMX; they would also like someone (such as a Play Ranger) to show them new tricks and help them with tricks. 14% of respondents wanted more exciting play equipment in bright colours and 13% would like somewhere to sit or hangout.

Consultation conclusion

When compiled, the consultation results show that children in all areas enjoy using fixed play equipment. Younger children (0 - 4 years) would like new, brightly coloured equipment, children aged 5 - 11 would like new and more exciting equipment in their playgrounds. Children aged over 12 would like more adventurous and challenging play equipment and seating/hang out areas. Comments made during all methods of consultation suggested that children of all ages are given boundaries and restrictions by their parents for safety reasons. They would therefore like play equipment as close as possible.

Children aged 5+ also indicated they would like more organised play events and games. This would be the type of work carried out by a Play Ranger and would include children being shown how to build a den, go on nature trails and enjoy open spaces. Children would like to have more natural play environments as well as playgrounds.

Children are aware of the limitations imposed on them by adults but also like to test their boundaries, many suggesting they want to do more challenging activities. This links with the audit findings that suggested a lack of play equipment for all age groups in all areas.

The consultation also concluded that children and young people have tried many different types of activities such as adventure playgrounds and zip wires, however, they would like to explore new and exciting opportunities such as den building and supervised games. Scoring highly as a desirable pastime is organised play, where children and young people are supervised and can learn and develop whilst being supported, receiving help and guidance from a qualified play professional.



FREEDOM TO PLAY



5. PLAY STRATEGY CONCLUSION



In conclusion, this strategy will have an impact on the lives of all residents, customers and visitors to the Harrogate District. However, the greatest impact will be on children and young people (aged 19 and under).

The Play Audit has proved that there are limited facilities for older children, and as a result the BIG Lottery money will be used to specifically address this gap in provision for teenagers. Using money from the BIG Lottery Fund, Commuted Sums, existing play budgets and other external funding sources, an Action Plan has been developed to improve the play opportunities across the District of Harrogate.

Establishment of new and enhancement of existing provision will require effective partnerships and sharing of resources as well as a need to attract new funding. Support for development and extension of existing provision, when coupled with creation of new opportunities for children's play, will enable identified gaps in current provision to be filled.

Over the next five years Harrogate Borough Council is committed to:

Creating more play spaces:

- Influencing planning decisions to ensure the planning of open spaces meet children's needs.
- Identifying and creating informal spaces for children's play.
- Promoting the use of open spaces as recreation areas and places for informal and formal play opportunities.
- Ensuring that play areas are inclusive, that people can easily access the play areas, move within the play areas and be able to use the facilities.
- Work with Parish Councils to help them to develop and improve existing areas for both formal and informal play opportunities.

Creating better opportunities for children's play:

- In rural areas and places without formal play facilities, mobile Play Rangers will be employed to provide play opportunities, teach children to play games, build dens and provide a safe, supervised play environment.
- Four existing play areas in Harrogate, Ripon, Knaresborough and Boroughbridge will be developed into "Super Parks". The play environments will be enhanced to have good quality, imaginative and challenging opportunities for toddlers, juniors and teenagers.
- Investment will be put into facilities for young people; this will include equipment and a space to hangout.
- Existing play areas will be enhanced to improve opportunities for children under six.
- The remaining play areas will be enhanced over time to meet the Harrogate Borough Council standard and will have more adventurous equipment.
- A skate park will be designed and constructed somewhere in the Harrogate area.
- More play opportunities will be created in the district's parks.
- We will ensure that there are opportunities for challenge within provision.
- There will be rationalisation of the existing children's playgrounds and closure of four poor quality, problematic play areas to enable the reallocation of resources to manage the enhancement and additional proposals identified.

Raising the profile of children's play:

- Further develop the Play Partnership with other council departments and other community sector groups to ensure that children's play is considered when reviewing other council policies.
- Develop a training program, website and associated information pack to educate interested parties in the funding, health and safety issues and legislation concerning play areas.
- Provide an advisory role for Parish Councils and potential developers of new play areas.

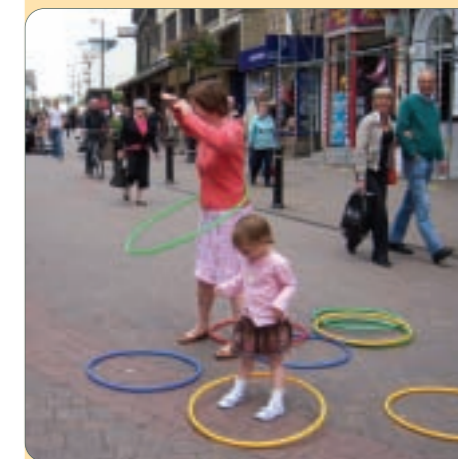
Giving children the opportunity to influence their play environments:

- The members of the Play Partnership will directly influence the development of the Council's Children and Young People's Participation Plan to create a young people's forum to help make decisions that directly affect them.
- Ensure that children and young people can directly influence the installation of new facilities, Super Parks, play area enhancements, opportunities for natural play, design of the skate park etc. by setting up forums and providing meaningful consultations.
- Engage young people and increase their responsibility by allowing them to be involved in the process of designing the type of areas they would like to hang about in and giving them more ownership of these areas, to promote positive behaviour.

Money from the BIG Lottery fund will allow nine of the District's play areas to be enhanced (one sixth of the Borough's playgrounds) plus youth provision for a further five in the rural areas. Commuted sums will be added to the project money to make the BIG money go further.

It is anticipated that the other projects and intentions laid out in the action plan will be completed in the future using further Commuted Sums, self financing schemes, external funding, existing financial and human resources.

In order for this Play Strategy to be a success and be an important and relevant document, a suitable, achievable, yet challenging Action Plan has been developed. This covers all aspects of play and details how these 'fit' in line with the main aims and with other corporate and national agendas.



PLAY



6.

PLAY STRATEGY ACTION PLAN



AIM 1
To ensure every child and young person has access to good quality play environments, which meet their needs for adventure, accessibility and choice across the Harrogate District.

Objectives	Action	Measurable Outcomes	Action Start Date	By When?	Future Years	Resources	Lead Officer and Member	Longer-term Planned Outcomes (Success)	Relevant Council Strategies
1.1 Involve the council departments and community sector groups in the Play Partnership.	1.1.1 Develop the Play Partnership encompassing Voluntary & Community Sector Groups, North Yorkshire County Council (NYCC), Police, Primary Care Trust (PCT), Further Education & all relevant Harrogate Borough Council (HBC) departments & Play Champion.	Minimum of five partners attend quarterly meetings. Minimum of seven interested parties on regular mailing list of minutes.	Mar 07	July 07	Continued development of Play Partnership. Regular quarterly meetings.	Parks Development Team (PDT). Leisure Museums and Arts (LMA).	Head of Parks and Open Spaces Cabinet Member Play Champion	Quarterly meetings attended by all relevant parties. Terms of Reference agreed. Member's feedback that meetings are constructive and effective.	Youth Participation Plan. Corporate Rural Community Investment Plan. HDSP Community Plan. Harrogate Borough Council Safer Communities Strategy. Corporate Improvement Plan. Diversity Strategy.

Objectives	Action	Measurable Outcomes	Action Start Date	By When?	Future Years	Resources	Lead Officer and Member	Longer-term Planned Outcomes (Success)	Relevant Council Strategies
1.2 Harrogate Borough Council LMA deliver quality provision for all children and young people.	1.2.1 Carry out review of existing HBC holiday play schemes to focus on access, usage and facility flexibility.	Annual report of recommendations every two years.	Sep 07	Annually	Review annually.	LMA.	Play Development Officer Cabinet Member Play Champion	Review of existing provision is completed. Base-line figures of access by children and young people are identified. Gaps for improvement are identified.	Youth Participation Plan. Diversity Strategy. Museums 5 Year Forward Plan. Sport & Active Recreation Strategy.
	1.2.2 Improve, enhance and develop present provision to meet the needs of children and young people in the District in relation to the findings from the review.	Improve two Harrogate Borough Council (HBC) play provisions per year.	Jan 08	Ongoing	Continued support utilising income from fees.	LMA. Fees collected against external costs. No extra costs.	Play Development Officer Cabinet Member Play Champion	All sites will deliver elements of provision across the Harrogate District. By 2012 numbers of children and young people accessing provision increases from baseline by 10% 5-11 years 25% 11-19 years.	Corporate Improvement Plan.

Objectives	Action	Measurable Outcomes	Action Start Date	By When?	Future Years	Resources	Lead Officer and Member	Longer-term Planned Outcomes (Success)	Relevant Council Strategies
1.3 Increase community based Good Quality Play throughout the Harrogate District.	1.3.1 Investigate opportunities from external agencies to deliver at HBC sites.	Investigate two opportunities per year.	Apr 08	Annually	Search for new partners.	LMA.	Play Partnership Community Leisure Manager Cabinet Member Play Champion	Minutes of Play Partnership & number of opportunities identified.	Parks and Open Spaces Strategy. Museums 5 Year Forward Plan. Harrogate Borough Council Safer Communities Strategy.
	1.3.2 Investigate and develop opportunities for further use of sites belonging to other agencies.	Increased use of one external site per year.	Apr 08	Jul 09 Ongoing	Support and maintain.	LMA. External Agencies. External Funding.	Play Development Officer Cabinet Member Play Champion Project Development Officer	Number of sites identified and fed back to Play Partnership meetings.	Corporate Rural Community Investment Plan. Youth Participation Plan.
	1.3.3 Identified sites are utilised appropriately in partnership with community-based groups.	Increase by one the number of sites and partners annually.	Apr 08	Jul 09 Ongoing	Review and improve.	LMA. No extra costs. External Funding.	Play Development Officer Cabinet Member Play Champion Project Development Officer	Annually review fed back to Play Partnership. Number of sites identified and fed back to Play Partnership meetings.	Sport & Active Recreation Strategy.

Objectives	Action	Measurable Outcomes	Action Start Date	By When?	Future Years	Resources	Lead Officer and Member	Longer-term Planned Outcomes (Success)	Relevant Council Strategies
1.4 Ensure that all Playwork staff, HBC, partner delivery staff and volunteers working with children and young people are good quality playworkers trained to National and Ofsted standards.	1.4.1 Work with external agencies to deliver Playwork training.	60 trained Play-workers per year.	July 07	Annually	Support, maintain and develop.	LMA Training Budget. External Funding.	Play Development Officer Cabinet Member Play Champion Project Development Officer	Number of staff attending training sessions and attaining national Ofsted standards.	Youth Participation Plan. Museums 5 year Forward Plan. Harrogate Borough Council Safer Communities Strategy. Corporate Improvement Plan.
	1.4.2 Identify external funding and secure for play-work NVQ3 training and development of play.	Identify one external fund for play-workers training annually.	June 07	Ongoing	Continued identification and application of funds.	LMA	Project Development Officer Cabinet Member Play Champion	Funding secured work based assessment to determine 'Good Quality' playworkers. Pass Ofsted inspections.	

Objectives	Action	Measurable Outcomes	Action Start Date	By When?	Future Years	Resources	Lead Officer and Member	Longer-term Planned Outcomes (Success)	Relevant Council Strategies
1.5 Ensure that every child and young person has access to play environments in line with HBC children's equipped playground standard.	1.5.1 Undertake audit of play areas annually to develop position statement.	Audit 60 play areas annually.	Mar 07	Annually	Review audit annually.	PDT	Play and Technical Officer Cabinet Member Play Champion	Inspections completed and standards of play area provision improved on previous years.	Strategy for Parks & Open Spaces Youth Participation Plan
	1.5.2 Identify potential sites for development and enhancement in line with results from the annual Audit.	Identify three potential sites for development or enhancement per year.	June 07	Mar 08 Annually	Review and monitor potential sites.	PDT	Play and Technical Officer Cabinet Member Play Champion	Audit of play sites completed. Enhancement and development plans completed and costed. Action Plan identified.	Harrogate Borough Council Safer Communities Strategy Corporate Rural Community Investment Plan
	1.5.5 Review brief for developers of new play environments.	Information pack distributed to all developers who enquire about new play areas.	Apr 08	Apr 09 Ongoing	Implementation of brief.	PDT	Head of Parks and Open Spaces Cabinet Member Play Champion	New guidance to developers provided, giving rise to more challenging and exciting play areas.	Cultural Strategy Housing Strategy
	1.5.6 Assess and develop opportunities for natural play in open spaces.	Identify two natural play opportunities in open spaces per year.	July 07	Ongoing	Review, monitor and deliver new opportunities.	PDT LMA	Play and Technical Officer Cabinet Member Play Champion	Additional play opportunities identified and developed.	

Objectives	Action	Measurable Outcomes	Action Start Date	By When?	Future Years	Resources	Lead Officer and Member	Longer-term Planned Outcomes (Success)	Relevant Council Strategies
1.6 Establishment of Play Ranger service. Dependent on BIG Lottery Funding	1.6.1 Agree scope of Play Ranger.	To produce a recruitment pack.	Dec 07	Jan 08	Play Rangers in post.	LMA External funding.	Play Development Officer Cabinet Member Play Champion	Appraisal of Play Rangers in position.	Strategy for Parks & Open Spaces Youth Participation Plan
	1.6.2 Secure funding from BIG Lottery Fund.	Funding secured and received.	Dec 07	Dec 09	Monitoring and evaluation of BIG fund.	LMA	Play Development Officer Project Development Officer Cabinet Member Play Champion	Funding secured and received.	Harrogate Borough Council Safer Communities Strategy HDSP Community Plan
	1.6.3 When funding secured, advertise and recruit.	Two Play Rangers recruited.	Feb 08	June 08	Monitor staff and recruitment.	LMA	Community Leisure Manager Cabinet Member Play Champion	Recruitment completed and posts filled.	Corporate Rural Community Investment Plan Cultural Strategy Housing Strategy Museums 5 Year Forward Plan Playing Pitch Strategy Sport & Active Recreation Strategy

Objectives	Action	Measurable Outcomes	Action Start Date	By When?	Future Years	Resources	Lead Officer and Member	Longer-term Planned Outcomes (Success)	Relevant Council Strategies
	1.6.4 Train Play Rangers.	Two fully trained Play Rangers.	June 08	May 2010	Review existing skills and train staff.	LMA	Play Development Officer Cabinet Member Play Champion	Additional training identified and undertaken. Fully trained staff.	Strategy for Parks & Open Spaces Youth Participation Plan
	1.6.5 Develop programme of activities.	One completed programme of activities each school term and each holiday period.	July 08	May 2010 & Ongoing	Review and develop.	LMA BIG funding.	Play Development Officer Cabinet Member Play Champion Project Development Officer	Successful programme of events. Number of children attending activities. Children's feedback of events.	HDSP Safer Communities Strategy HDSP Community Plan Corporate Rural Community Investment Plan
	1.6.6 Explore new funding opportunities.	External funding identified.	May 09	May 2010 Ongoing	LMA continually explore third party opportunities.	LMA External funding.	Project Development Officer Cabinet Member Play Champion	Continued delivery of Play Ranger service.	Cultural Strategy Housing Strategy Museums 5 Year Forward Plan
	1.6.7 Develop third party opportunities for continuation of Play Ranger scheme.	Play Ranger Workshops to promote continued Play Ranger service.	Jan 09	May 2010 & Ongoing	LMA continually explore third party opportunities.	LMA	Community Leisure Manager Cabinet Member Play Champion	Play Ranger scheme delivered by third parties.	Playing Pitch Strategy Sport & Active Recreation Strategy

Objectives	Action	Measurable Outcomes	Action Start Date	By When?	Future Years	Resources	Lead Officer and Member	Longer-term Planned Outcomes (Success)	Relevant Council Strategies
1.7 Maximise opportunities for development of informal and formal play opportunities through external funding.	1.7.1 Research and keep up to date with external funding opportunities.	Information obtained.	July 07	July 08	Annually. Ongoing.	LMA PDT	Project Development Officer Cabinet Member Play Champion	New opportunities identified as they occur.	Youth Participation Plan. Museums 5 Year Forward Plan. Strategy for Parks & Open Space.
	1.7.2 Apply for external funding.	Funding applications made.	July 07	July 08	Annually. Ongoing.	LMA PDT	Project Development Officer Cabinet Member Play Champion	Projects successfully delivered through external funding sources.	

AIM 2 To provide challenging play environments to inspire, innovate and stimulate children and young people to explore their surroundings.									
Objectives	Action	Measurable Outcomes	Action Start Date	By When?	Future Years	Resources	Lead Officer and Member	Longer-term Planned Outcomes (Success)	Relevant Council Strategies
2.1 Involve the council departments and community sector groups in the Play Partnership.	2.1.1 Develop the Play Partnership encompassing Voluntary & Community Sector Groups, North Yorkshire County Council (NYCC), Police, Primary Care Trust (PCT), Further Education and all relevant HBC departments and Play Champion.	Minimum of five partners attend quarterly meetings. Minimum of seven interested parties on regular mailing list of minutes.	Mar 07	July 07	Continued development of Play Partnership. Regular quarterly meetings.	PDT LMA	Head of Parks and Open Spaces Cabinet Member Play Champion	Quarterly meetings attended by all relevant parties. Terms of Reference agreed. Member's feedback that meetings are constructive and effective.	Youth Participation Plan Corporate Rural Community Investment Plan Harrogate Borough Council Safer Communities Strategy Corporate Improvement Plan Diversity Strategy

Objectives	Action	Measurable Outcomes	Action Start Date	By When?	Future Years	Resources	Lead Officer and Member	Longer-term Planned Outcomes (Success)	Relevant Council Strategies
2.2 Develop the understanding of internal and external agencies/staff of natural informal play.	2.2.1 Train Play Ranger staff in the value and importance of natural play.	All Play Rangers trained.	April 08 onwards	Ongoing	Update annually.	BIG Lottery Funding.	Play Development Officer Cabinet Member Play Champion	Training undertaken.	Strategy for Parks & Open Spaces Housing Strategy Youth Participation Plan
	2.2.2 Raise the awareness of the importance of natural play within the whole of the Parks team.	Awareness raised within the Parks team.	Dec 07 (Parks AGM)	Ongoing	Update annually.	PDT	Head of Parks and Open Spaces Cabinet Member Play Champion	Awareness raised.	
	2.2.3 Use Parks Audit information to identify and develop possible sites for natural play.	Identify two natural play opportunities per year.	Sep 08	Oct 08 & ongoing	Review audit and develop potential for natural play opportunities.	PDT LMA	Parks Development Manager Play Development Officer Cabinet Member Play Champion	Number of 'natural' areas developed each year.	
	2.2.4 Use Play Rangers to educate children and young people on their rights to access public open space.	Develop baseline figures and increase usage by 20% per year.	July 08	July 10	Future continuation dependent on further funding being secured.	BIG lottery funding.	Play Development Officer Cabinet Member Play Champion	Amount of consultation undertaken with children and young people.	

Objectives	Action	Measurable Outcomes	Action Start Date	By When?	Future Years	Resources	Lead Officer and Member	Longer-term Planned Outcomes (Success)	Relevant Council Strategies
2.3 Establishment of four Super Play Environments in major urban locations within the District.	2.3.1 Boroughbridge Super Play Environment.	New Super Play Environment is established.	Sep 07	Dec 09	Maintain play equipment.	Play budget. External funding e.g. BIG Lottery. Commutted Sums.	Parks Development Manager Cabinet Member Play Champion	Funding secured, consultation completed, scheme developed and delivered.	Strategy for Parks & Open Spaces. Youth Participation Plan.
	2.3.2 Ripon Spa Park Super Play Environment.	New Super Play Environment is established.	Sep 07	Dec 09	Maintain play equipment.	Play budget. External funding e.g. BIG Lottery. Playful Ideas. Commutted Sums.	Parks Development Manager Cabinet Member Play Champion	Funding secured, consultation completed, scheme developed and delivered.	Harrogate Borough Council Safer Communities Strategy. HDSP Community Plan. Diversity Strategy.
	2.3.3 Knaresborough Pool Super Play Environment.	New Super Play Environment is established.	Sep 08	Dec 2010	Maintain play equipment.	Play budget. External funding e.g. BIG Lottery. Playful Ideas. Commutted Sums.	Parks Development Manager Cabinet Member Play Champion	Funding secured, consultation completed, scheme developed and delivered.	
	2.3.4 Valley Gardens Super Play Environment.	New Super Play Environment is established.	Sep 09	Dec 2011	Maintain play equipment.	Play budget. External funding. Commutted Sums.	Parks Development Manager Cabinet Member Play Champion	Funding secured, consultation completed, scheme developed and delivered.	
	2.3.5 Development and provision of Skate Park in Harrogate.	Skate park developed.	Sep 07	July 08	Maintain Skate Park equipment.	PDT External agencies. External funding. Play Budget.	Head of Parks and Open Spaces Cabinet Member Play Champion	Funding secured, consultation completed, Skate Park scheme developed and delivered.	

Objectives	Action	Measurable Outcomes	Action Start Date	By When?	Future Years	Resources	Lead Officer and Member	Longer-term Planned Outcomes (Success)	Relevant Council Strategies
2.4 Assess the way play experiences are designed and provided to ensure an acceptable element of risk.	2.4.1 Complete risk assessments on all 60 equipped play opportunities.	Risk assessments complete.	July 07	July 08 Ongoing	Annually.	PDT	Play and Technical Officer Cabinet Member Play Champion	Level of current risk monitored on equipped play opportunities.	Strategy for Parks & Open Spaces. Harrogate Borough Council Safer Communities Strategy.
	2.4.2 Keep up to date with Play England/Play Council developments regarding acceptable risk and BS EN1176 & 1177	Up to date with developments through attendance at Yorkshire Play Officers Forum and mailings from Play England.	July 07	July 08 Ongoing	Annually.	PDT	Play and Technical Officer Cabinet Member Play Champion	Attendance at quarterly Yorkshire Play Officers Forum. Information fed back to Play Partnership.	Corporate Rural Community Investment Plan. Sport & Active Recreation Strategy.
	2.4.3 Make recommended changes to new designs for Equipped Play experiences. Make changes where possible to existing Equipped Play facilities.	New designs incorporate any changes/recommendations. Where appropriate, five existing equipped facilities changed.	July 07	July 08 Ongoing	Annually.	PDT	Play and Technical Officer Cabinet Member Play Champion	Play experiences are designed and provided in accordance with acceptable elements of risk.	

AIM 3 To work with partners and parents to raise awareness of the importance and value of play to all children and young people and whilst working in partnership with these agencies, support the development of new play opportunities.									
Objectives	Action	Measurable Outcomes	Action Start Date	By When?	Future Years	Resources	Lead Officer and Member	Longer-term Planned Outcomes (Success)	Relevant Council Strategies
3.1 Involve the council departments and community sector groups in the Play Partnership.	3.1.1 Develop the Play Partnership encompassing Voluntary & Community Sector Groups, NYCC, Police, Primary Care Trust (PCT), Further Education and all relevant HBC departments and Play Champion.	Minimum of five partners attend quarterly meetings. Minimum of seven interested parties on regular mailing list of minutes.	Mar 07	July 07	Continued development of Play Partnership. Regular quarterly meetings.	PDT LMA	Head of Parks and Open Spaces Cabinet Member Play Champion	Quarterly Meetings attended by all relevant parties. Terms of Reference agreed. Member's feedback that meetings are constructive and effective.	Youth Participation Plan Corporate Rural Community Investment Plan Harrogate Borough Council Safer Communities Strategy Corporate Improvement Plan Diversity Strategy
	3.2 Increase partnership working with NYCC.	3.2.1 Establish good communication links regarding extended schools.	July 07	Ongoing	Maintain communication links with Extended Schools Coordinators	LMA	Play Development Officer Cabinet Member Play Champion	Good communication links established, information exchanged and partnership working achieved.	Strategy for Parks & Open Spaces Museums 5 Year Forward Plan Youth Participation Plan Diversity Strategy Sport & Active Recreation Strategy

Objectives	Action	Measurable Outcomes	Action Start Date	By When?	Future Years	Resources	Lead Officer and Member	Longer-term Planned Outcomes (Success)	Relevant Council Strategies
3.3 All third parties have a basic understanding of play and the importance of it for all children & young people.	3.3.1 Training programme is developed for relevant third parties (Head Teachers, Park Wardens, Community Police, Parish Councils etc.), which includes funding, H&S legislation etc.	Ten delegates attend training programme annually.	Apr 09	Apr 2010	Review training programme and update as appropriate.	External funding & Support. PDT LMA	Head of Parks and Open Spaces Cabinet Member Play Champion	Training courses delivered annually. Strategy for Parks & Open Spaces. Museums 5 Year Forward Plan. Harrogate Borough Council Safer Communities Strategy. Corporate Rural Community Investment Plan. Diversity Strategy. Playing Pitch Strategy. Sport & Active Recreation Strategy.	
	3.3.2 Information packs are produced for third parties to access further information linked to the training offered.	Information packs are produced in line with training provided and distributed to ten delegates annually.	Apr 09	Apr 2010	Review and amend as appropriate.	LMA PDT	Head of Parks and Open Spaces Cabinet Member Play Champion	Information packs available and sent out. Information packs available on-line.	
	3.3.3 HBC website is developed to become One Stop Shop for information on play in Harrogate District.	25 hits on website in year one, to increase by 5% annually. Information on Parks available online.	Apr 09	Dec 09	Annual review and update.	PDT LMA	Head of Parks and Open Spaces Cabinet Member Play Champion	Completion of web site. Continued update of information. Annual feedback recorded on website content.	
	3.3.4 Practical project support and advice is offered regarding funding and project development for play.	Record details of third parties – minimum of three per year.	Mar 09	Mar 2010	Review annually.	PDT	Play and Technical Officer Cabinet Member Play Champion	Annual update to Play Partnership.	

Objectives	Action	Measurable Outcomes	Action Start Date	By When?	Future Years	Resources	Lead Officer and Member	Longer-term Planned Outcomes (Success)	Relevant Council Strategies
3.4 All external and internal third parties are aware of the council's Play Strategy and its key objectives.	3.3.5 Investigate and develop opportunities for further use of sites belonging to other agencies.	Increase use of two external sites annually.	Apr 08	Apr 09 Ongoing	Review opportunities annually.	External funding.	Play Development Officer Cabinet Member Play Champion	Number of sites identified and fed back to Play Partnership meetings. Good communication with external agencies.	Strategy for Parks & Open Spaces. Museums 5 Year Forward Plan. Harrogate Borough Council Safer Communities Strategy. Corporate Rural Community Investment Plan. Youth Participation Plan. Diversity Strategy.
	3.4.1 Print strategy launch with good media coverage with support of the Play Champion.	Press release sent to all local newspapers. Appears on HBC website.	Sep 07	Dec 07	N/A	PDT LMA Communications & Media Manager. BIG Lottery Fund.	Head of Parks and Open Spaces Cabinet Member Play Champion	Media coverage i.e. TV, radio, press. Raised awareness.	Strategy for Parks & Open Spaces Museums 5 Year Forward Plan Youth Participation Plan Diversity Strategy Sport & Active Recreation Strategy

AIM 4

To promote the development of active and meaningful consultations with children and young people, local residents and young people, local residents, organisations and agencies involved with play provision in order to direct the way that play opportunity is delivered.

Objectives	Action	Measurable Outcomes	Action Start Date	By When?	Future Years	Resources	Lead Officer and Member	Longer-term Planned Outcomes (Success)	Relevant Council Strategies
4.1 Link with the Department of Corporate Policy & Improvement (DCP&I) regarding the establishment of a Corporate Children & Young Peoples Participation Plan.	4.1.1 A member of the Play Partnership is part of the steering group to ensure that play is on the agenda.	Attendance at Play Partnership meetings.	July 07	Ongoing	Ongoing links with DCP&I	LMA	Community Leisure Manager Cabinet Member Play Champion	Meetings attended, minutes recorded and feedback to Play Partnership following each meeting. Play is a significant part of the corporate Children & Young People's Participation Plan when approved and implemented.	Youth Participation Strategy. Strategy for Parks & Open Spaces. Housing Strategy. Harrogate Borough Council Safer Communities Strategy. HDSP Community Plan.
4.2 Ensure that children and young people are active participants in the whole process of implementing any project that can affect their play experience.	4.2.1 Support the creation of a Children & Young People's Forum according to the outcomes of the Participation Plan.	Children and Young People's Forum established.	Apr 08	Ongoing	Children and Young People's Forum established as required for play projects.	LMA PDT	Community Leisure Manager Cabinet Member Play Champion	Review arrangement following approval of Youth Participation Plan.	Corporate Rural Community Investment Plan. Cultural Strategy. Diversity Strategy.

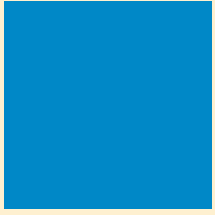
Objectives	Action	Measurable Outcomes	Action Start Date	By When?	Future Years	Resources	Lead Officer and Member	Longer-term Planned Outcomes (Success)	Relevant Council Strategies
4.3 Ensure that every child and young person has access to play environments in line with HBC equipped children's playground standard.	4.3.1 Improve two existing Play Areas involving development projects as identified in the audit. 4.3.2 Assess and develop new opportunities for natural play in open spaces.	Consultation with two groups of local residents in relation to larger development sites. Inform local residents of intentions to develop two natural play sites.	July 07	July 08	Ongoing	PDT BIG Lottery Fund. External Funding. Commuted Sums. PDT LMA	Play and Technical Officer Cabinet Member Play Champion Play and Technical Officer Play Development Officer Cabinet Member Play Champion	All relevant children's playgrounds reviewed and costings established for enhancement work. Increased communication with residents about play opportunities.	Strategy for Parks and Open Spaces. Youth Participation Plan. Harrogate Borough Council Safer Communities Strategy. HDSP Community Plan. Corporate Rural Community Investment Plan. Cultural Strategy. Housing Strategy. Diversity Strategy.

Objectives	Action	Measurable Outcomes	Action Start Date	By When?	Future Years	Resources	Lead Officer and Member	Longer-term Planned Outcomes (Success)	Relevant Council Strategies
4.4 Establishment of four Super Play Environments in major urban locations within the District.	4.4.1 Creation and installation of Boroughbridge Super Play Environment.	Establishment of Play Forum in the Boroughbridge area, to include 10 children. Consultation with opportunity with 30% of local residents.	Sep 07	Dec 09	N/A	Parks Development Team budget. External Funding. Commuted Sums.	Parks Development Manager Cabinet Member Play Champion	Funding secured, consultation completed, scheme developed and delivered.	Strategy for Parks & Open Spaces. Youth Participation Plan. Harrogate Borough Council Safer Communities Strategy. HDSP Community Plan. Diversity Strategy
	4.4.2 Creation and installation of Ripon Spa Park Super Play Environment.	Establishment of Play Forum in the Ripon area, to include 10 children. Consultation with 30% of local residents.	Sep 07	Dec 09	N/A	Parks Development Team budget. External Funding. Commuted Sums.	Parks Development Manager Cabinet Member Play Champion	Funding secured, consultation completed, scheme developed and delivered.	
	4.4.3 Creation and installation of Knarborough Pool Super Play Environment.	Establishment of Play Forum in the Knarborough area, to include 10 children. Consultation with 30% of local residents.	Sep 08	Dec 2010	N/A	Parks Development Team budget. External Funding. Commuted Sums.	Parks Development Manager Cabinet Member Play Champion	Funding secured, consultation completed, scheme developed and delivered.	
	4.4.4 Creation and installation of Valley Gardens Super Play Environment.	Establishment of Play Forum in the Harrogate area, to include 10 children. Consultation with 30% of local residents.	Sep 09	Dec 2010	N/A	Parks Development Team budget. External Funding. Commuted Sums.	Parks Development Manager Cabinet Member Play Champion	Funding secured, consultation completed, scheme developed and delivered.	

Objectives	Action	Measurable Outcomes	Action Start Date	By When?	Future Years	Resources	Lead Officer and Member	Longer-term Planned Outcomes (Success)	Relevant Council Strategies
4.5 Ensure that all HBC fixed play provision is engaging for all age groups and meets HBC standards.	4.5.1 Development of provision for under 6s. Establish projects with external agencies including community safety, police children and young people etc.	Consultation with two external agencies. Consultation with 10 children per area as and when appropriate.	July 07	July 08 & ongoing	Consult with relevant children and young people.	Parks Development Team budget. External Funding.	Parks Development Officer Cabinet Member Play Champion	Key partner involvement. Appropriate methods of consultation established – determined through discussion with agencies etc.	Youth Participation Plan. Strategy for Parks & Open Spaces. Housing Strategy. Harrogate Borough Council Safer Communities Strategy. HDSP Community Plan. Corporate Rural Community Investment Plan. Cultural Strategy. Diversity Strategy.
	4.5.2 Development of provision for 7 to 11 year olds. Establish projects with external agencies including community safety, police, children and young people etc.	Consultation with two external agencies. Consultation with 10 children per area as and when appropriate.	July 07	July 08 & ongoing	Consult with relevant children and young people.	Parks Development Team budget. External Funding.	Parks Development Officer Cabinet Member Play Champion	Key partner involvement. Appropriate methods of consultation established – determined through discussion with agencies etc.	
	4.5.3 Development of provision for 11 to 19 year olds. Establish projects with external agencies including community safety, police children and young people etc.	Consultation with two external agencies. Consultation with 10 young people per area as and when appropriate.	July 07	July 08 & ongoing	Consult with relevant children and young people.	Parks Development Team budget. External Funding.	Parks Development Officer Cabinet Member Play Champion	Key partner involvement. Appropriate methods of consultation established – determined through discussion with agencies etc.	
	4.5.4 Development and provision of skate park in Harrogate.	Consultation with local residents. Consultation with 10 young people per area as and when appropriate.	Feb 07	July 08	Consult with young people prior to establishment of skate park.	Parks Development Team budget. NYCC funding.	Head of Parks and Open Spaces Cabinet Member Play Champion	Skate park provided.	



FREEDOM TO PLAY



PLAY STRATEGY 2009 – 2012



LOTTERY FUNDED