



Harrogate & District
Safer Communities
Partnership



Partnership **PLAN** 2008-2011



Working in
partnership across
Harrogate District and North Yorkshire



Acknowledgements

The Harrogate District Safer Communities Partnership would like to thank all partners for their valued contribution in the development of the Plan and their continued support in addressing community safety concerns across the Harrogate district.



Our Vision

To maintain and improve the quality of life within the community, ensuring that people feel safe and not threatened by crime and disorder or other antisocial behaviour.



Foreword

Message from the Partnership

The Harrogate District Safer Communities Partnership, formed as a result of the Crime & Disorder Act 1998, has emerged as a top performing Partnership, consistently meeting targets and responding to the emerging issues that affect the local community. The Partnership has continually topped the national league on crime reduction among similar partnerships and last year received formal recognition from the Home Office, who commended the partnership as 'strongly performing'.

Not only does the Partnership have a strategic focus but it also prides itself on listening and responding to those people and communities that may be the victims of crime and antisocial behaviour throughout the district.

The Partnership is not complacent and needs to continue to maintain and in some instances improve on this foundation to enhance certain areas of its work. It has been recognised that by working together, a real difference can be made by drawing on expertise within both statutory and voluntary agencies.

This Partnership Plan follows on from previous Safer Communities Strategies and responds to new legislative requirements and good practice. It will be reviewed on an annual basis with opportunities for wider consultation and comment.

As a Partnership we actively encourage involvement and participation in our common aim to make the Harrogate District a safer place and look forward to developing these links further in the year ahead.

Contents

Acknowledgements	3
Our Vision	3
Message from the Partnership	4
Contents	5
The Partnership Plan	6
Harrogate District	7
Partnership Processes	8
Engaging with our Communities	10
Our Priorities	11
Resources and Funding	15
Action Planning	16
Links to Web Sites	17
Appendices.....	18



The Partnership Plan

This Partnership Plan has been developed following legislative changes brought in under the Crime and Disorder Act Review 2006.

Previously, Crime and Disorder Reduction Partnerships compiled a three year Strategy which was designed to tackle the priorities identified for the whole period of that Strategy. The last Strategy ended at the end of March 2008.

Priorities change as time progresses and partnerships should now be prepared to change their priorities in line with the needs of their communities.

This plan sets out the expectations of the Harrogate District Safer Communities Partnership; what it will deliver over the next three years, the resources available and how performance will be measured, and will act as one of the mechanisms to communicate to local people. It builds on our analysis of crime and disorder and sets our priorities.

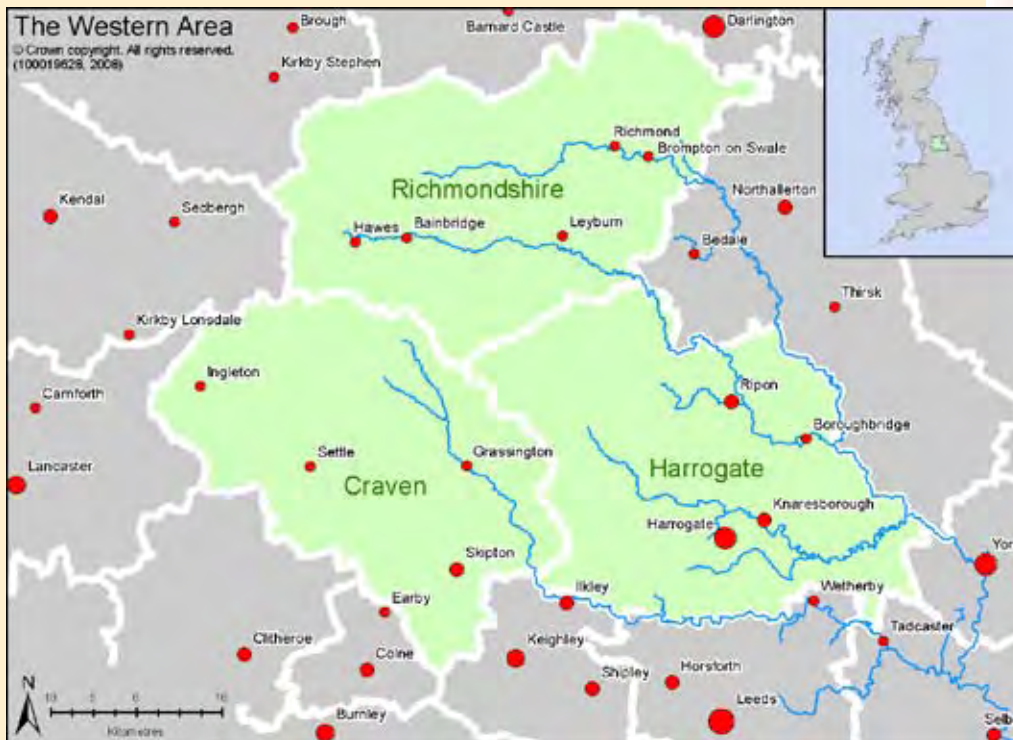
The Partnership Plan takes these priorities forward and identifies the ways in which they will be delivered.

It will be reviewed annually and covers the period April 2008 – March 2011. It includes short, medium and long-term objectives and aligns to other local and countywide plans from individual and collective agencies.

The Partnership has developed a Joint Strategic Intelligence Assessment (J.S.I.A.). This document pulls together data and information from various partners. It shows levels and patterns of crime, disorder and substance misuse, changes in those levels, analysis of why those changes have occurred and a review of the previous year's performance. The J.S.I.A. is an 'intelligence led' approach to community safety ensuring that we get the right resources in the right place at the right time to sustain reductions in crime and disorder. The strategic assessment helps us to understand the community safety concerns in the district and in turn our priorities.



Harrogate District



The Harrogate District forms part of the County of North Yorkshire and covers 1,308 sq km (505 square miles) comprising a large rural area extending north of the Leeds/Bradford conurbation and up to the eastern fringes of the Yorkshire Dales National Park. The Rivers Swale, Ure and Ouse broadly contain the district to the east and flow southward through the Vale of York. The River Wharfe generally marks the southern boundary of the District, while to the west and north, the land rises to form part of the Pennine upland chain. Much of the western half of the district forms part of the Nidderdale Area of Outstanding Natural Beauty. The sub-regional setting and main geographical features of the district are shown on the map above.

The 2006 Office of National Statistics report showed the Harrogate District to have a resident population of 157,800 divided amongst 68,494 households. This represents a population density of 116 people per square kilometre.

The annual crime rate in Harrogate district is 49.6 crimes per 1000 population.

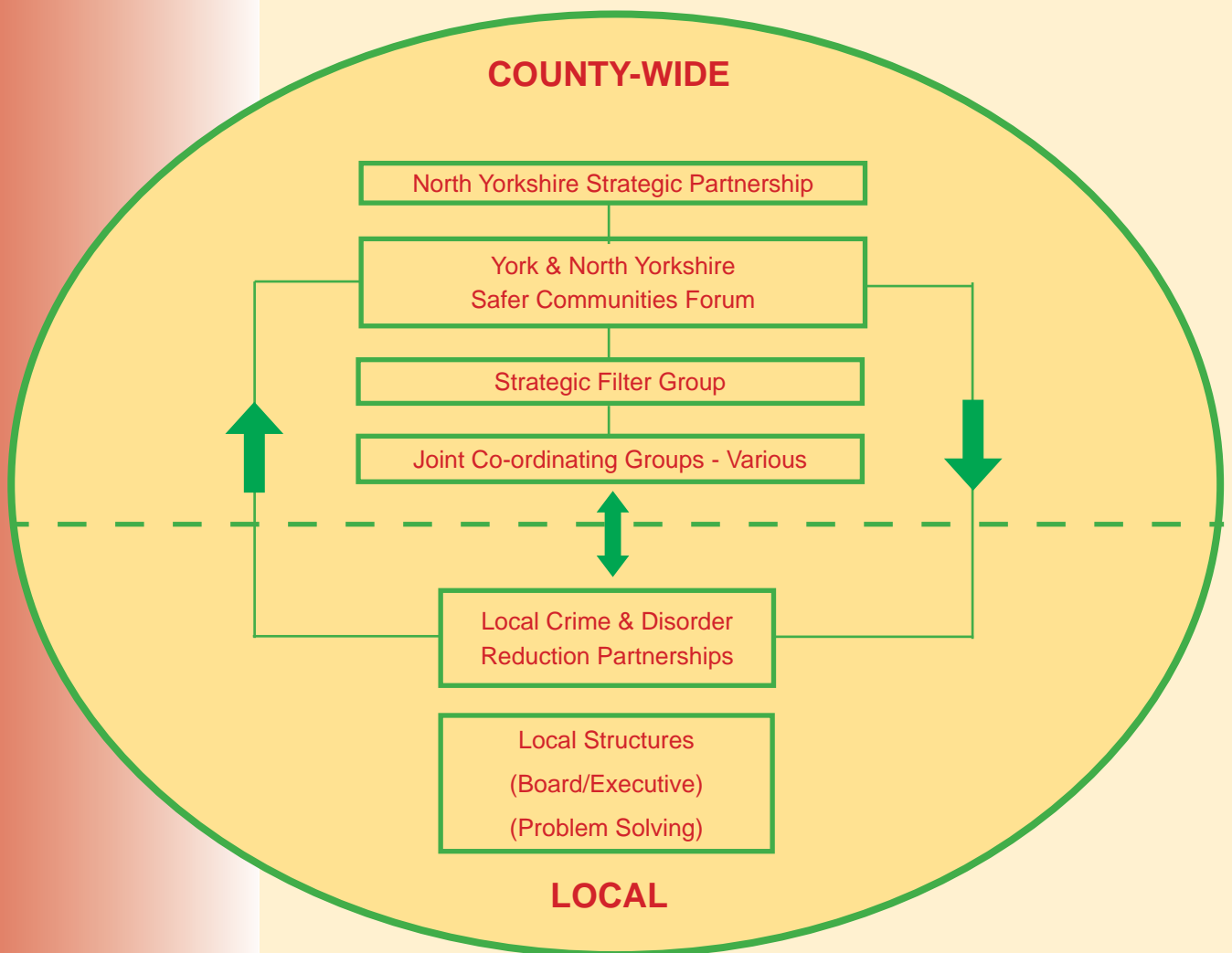


Partnership Processes

Structure Overview

Within the county of North Yorkshire and under the overall leadership of the North Yorkshire Strategic Partnership there is a commitment to work in a balanced manner, ensuring that where we are able to work strategically and in partnership this will be done, but also recognising the importance of working to deliver local priorities identified by local communities.

The structure aims to simply illustrate the relationship between the county composition and the local make-up.



County Level Structure

The York & North Yorkshire

Safer Communities Forum brings

together countywide agencies, other relevant partnerships such as Local Criminal Justice Board (LCJB) and representatives that have a commitment to working in partnership to tackle the issues of crime, disorder and antisocial behaviour. The Forum identifies those priorities that are of the greatest concern and sets targets to address these.

Underpinning the Forum are the Joint Co-ordinating Groups, which are tasked to identify specific actions that will, by working together, make a positive difference in key action areas.

Local Level Structure

The local Crime & Disorder Reduction Partnership (CDRP) led by the 'Executive Group' has a statutory responsibility to produce this plan and the Strategic Assessment. Having the right people around the table is critical to the success at a local level and it is therefore recognised that the composition may vary from one locality to the next.

Local delivery is the key to the success of any partnership and again these structures will vary. Models that are familiar include multi-agency problem solving groups and task and finish groups, which are brought together to tackle or deal with a specific issue which, once resolved or concluded, they disband. The frequency of these meetings will again reflect local needs.

The Executive Membership includes as a minimum the 'responsible authorities' as determined by the Crime and Disorder Act 1998:-

- Harrogate Borough Council
- North Yorkshire County Council
- North Yorkshire Police
- North Yorkshire Police Authority
- York & North Yorkshire Primary Care Trust
- North Yorkshire Fire and Rescue Service



Engaging with our Communities

Engaging the community is a core function of the partnership; without understanding the needs of the local community priorities would be lost and the focus would not be directed. The Partnership will not undertake this function in isolation, it will embrace the structures that exist already to engage with communities including those that are hard to reach. It will work in conjunction with police safer neighbourhood teams and others working within our communities; it is an inclusive approach.

The Partnership will develop and enhance approaches that will allow communities to identify their priorities and have a voice to ensure issues affecting their lives are dealt with and where appropriate, agencies, officers and elected members are held to account.

A variety of approaches will be used including written material, the use of websites, media opportunities, public meetings, interactive sessions and face the people sessions.

Community engagement is not just something that the Partnership wants to undertake, legislation also makes it a legal requirement, and we want to ensure it is a positive and worthwhile experience.

The Partnership will develop a communications plan in order that this area of work becomes more inclusive and community focused.

We are committed to raising awareness, promoting safer communities and offering preventative advice on a variety of issues affecting our communities.



Our priorities

Introduction

Our priorities have been developed from our J.S.I.A. compiled using information gathered from all the responsible authorities, wider partners and the community.

The Partnership priorities also include the delivery of county wide local area agreement targets.

Monthly performance will be measured by the Executive. Exception reports will be taken allowing trends and activity against priority actions to be monitored. Quarterly reports will be received from partnership agencies to supplement this data. The systems will link into the countywide reporting mechanism as part of the local area agreement.

Safer Neighbourhoods

We will work together to deliver safer neighbourhoods by tackling antisocial and unacceptable behaviour through the promotion of positive values and in challenging behaviour.

We monitor the levels and types of antisocial behaviour and criminal damage providing an appropriate response to deal with it. We will do this through education, diversion and ultimately enforcement.



Priority	Baseline 07/08	Target 08/09	09/10	10/11
Perceptions of Antisocial Behaviour – LAA 2 NI 17	14%	13%	12%	11%
Perception of Drunk and Rowdy Behaviour as a problem LAA2 – NI 41	Place survey to be carried out Autumn 2008			



Crime

We aim to reduce violence across the Harrogate District, to increase the reporting of domestic abuse and reduce repeat incidents of domestic violence, encouraging reporting to the police, voluntary and community groups so we can give help and support to victims.

Cases of wounding and common assault are often associated with alcohol consumption. When considering reducing violence we will be looking at our night time economy, working with Accident and Emergency Departments. We will monitor and react to information obtained from them regarding individuals attending the department.

We will be adopting the principles of `Making Safe` for domestic abuse. This is a multi agency initiative to support the victims, allowing them to remain safe within their own homes and at the same time challenging the offenders' behaviour.

Performance Measures

Priority	Baseline 07/08	Target 08/09	Target 09/10	Target 10/11
Reduce Assault with Injury crime rate (Wounding and Common Assault) LAA2 NI 20	TBC			
Reduce repeat incidents of Domestic Abuse. LAA2 NI32	TBC			
Reduce incidents of Violent Crime. LAA2 60	TBC			

Safer Roads

Although levels of road traffic collisions are low, we continue to work towards even lower figures.

We take an overview and promote safety and the reduction of accidents on our roads in any way we can.

We work on preventative measures such as raising awareness about how to be safe on our roads and will specifically target young drivers (e.g. Drink driving awareness campaigns).

We also deal with enforcement issues such as working to reduce speeding in villages and town centres. We recently purchased some speed matrices and will be using these to monitor speeding across the district and using the information to inform policing patrols



Performance Measures

Priority	Baseline 07/08	Target 08/09	Target 09/10	Target 10/11
Reduction in people killed or seriously injured in road Traffic Collisions LAA2 – NI 47	159	153	148	143
Reduce fatalities in line with '95 Alive Strategy'	19	18	17	16





Alcohol and Substance Misuse

Our local action plans have been developed considering the outcomes of the following strategies:

- The National Drugs Strategy
- The Tackling Drugs Together Strategy
- The National Alcohol Strategy
- The York and North Yorkshire Alcohol Harm Reduction Strategy

We will focus on working in partnership - including the Young Persons Drug and Alcohol Reference Group - to improve information and support a change in culture to try to reduce the harm caused by binge drinking and substance misuse.

Better identification and treatment of alcohol misuse, tackling alcohol related crime and improving services to victims and witnesses is a priority.

Our plan will deliver the objectives of the National Safe, Sensible and Social Alcohol policy, tackling problem premises, protecting young people and focusing on those who cause most harm in our communities.

We wish to create an environment that promotes sensible drinking and reduces the harm caused by alcohol and substance misuse. In particular we will produce an action plan around substance misuse in young people.

The reduction of alcohol and substance misuse is seen as a cross cutting theme across all of our priority areas, in particular assisting to reduce:

- Violent Crime
- Public concern over drunken behaviour
- Alcohol-related hospital admissions
- Road Traffic Collisions.

Priority	Baseline 07/08	Target 08/09	Target 09/10	Target 10/11
Increasing take up of needle exchange in rural areas	9,500	10,450	11,900	13,090
Increase harm reduction, overdose awareness & training	0	10	15	20
Increase the number of stimulant users in treatment	70	84	92	101

Resources and Funding

Maximising Resources

Within the Harrogate, Richmondshire and Craven areas there is a commitment to work to maximise the resources available. This has been evident for several years with the joint funding of a Crime Data and Geographical Information Systems (GIS) Officer.

This dedicated resource and capability ensures information is available to assist in problem solving, resulting in targeted actions and delivery.

The efficient use of resources is an area that will continue to be explored, including how limited and reducing funding can be maximised to have the greatest impact not only within district boundaries but also across the county.



Funding

The funding available to Partnerships varies each year and the mechanisms to attract funding to areas that are low in crime is challenging.

With the introduction of the Local Area Agreement, Partnerships will receive allocations based upon a variety of formulas linking to targets, crime levels, population and priority work areas. Top slicing of funding will potentially become more commonplace with a clear strategic focus from the York & North Yorkshire Safer Communities Forum on allocations and spending.

Financial contributions from the local authorities, Police Authority, Police Force and County Council have historically enhanced the local delivery and it is envisaged that these will continue during 2008/09 with a review likely in the years to follow.

Each Partnership will continue to explore opportunities for attracting external funding to complement the local delivery.



Action Planning

The action planning process clearly defines the work that needs to be undertaken in order that the partnership can meet its objectives and tackle the issues that have been raised in the joint strategic intelligence assessment.

The objectives set will be driven by the SMART principles:

- **Specific** Specify what we want to achieve
- **Measurable** Enable us to measure if we are meeting our objectives
- **Achievable** Will be achievable and attainable
- **Realistic** Achieved with the resources available
- **Timely** Occur within a set timescale

By adopting this approach, the aim of our objectives can be understood and the process of who is accountable can be established.



Links to Web Sites



Harrogate District Safer Communities Partnership

www.harrogate.gov.uk/communitysafety

North Yorkshire Fire and Rescue Service

www.northyorksfire.gov.uk



North Yorkshire Police

www.northyorkshire.police.uk



North Yorkshire Police Authority

www.nypa.org.uk



North Yorkshire and York Primary Care Trust

www.nyypct.nhs.uk



North Yorkshire County Council

www.northyorks.gov.uk



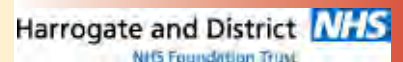
Harrogate Borough Council

www.harrogate.gov.uk



Harrogate and District NHS Foundation Trust

www.hdft.nhs.uk



Harrogate Alcohol and Drugs Agency

www.hadaonline.co.uk

Appendices

Action Plans

North Yorkshire Community Safety Strategy

North Yorkshire Alcohol Strategy

